

AN14121

Coexistence Overview for RW61x

Rev. 2.0 — 1 November 2024

Application note

Document information

Information	Content
Keywords	RW610, RW612, Wi-Fi radio, Bluetooth radio, 802.15.4 radio, coexistence, real time arbitration, interference avoidance, traffic priority, rules, central hardware Packet Traffic Arbiter (PTA), local hardware arbiter, coexistence software, request/grant
Abstract	Provides an overview of coexistence between Wi-Fi and Bluetooth LE or 802.15.4 radios.



1 Scope

This document provides an overview of coexistence between Wi-Fi and Bluetooth LE or 802.15.4 radios in RW61x. NXP's coexistence solution provides real time arbitration between on-chip radios on a per-packet basis.

Note: *RW61x refers to RW610 and RW612 where:*

- *RW610 is a highly integrated, low-power wireless MCU with an integrated MCU and Wi-Fi 6 + Bluetooth Low Energy (LE) radios.*
- *RW612 is a highly integrated, low-power tri-radio wireless MCU with an integrated MCU and Wi-Fi 6 + Bluetooth Low Energy (LE) / 802.15.4 radios.*

In this document and for RW612 only, Bluetooth LE/802.15.4 represents Bluetooth LE or 802.15.4 as both radios cannot coexist.

2 Coexistence architecture overview

The coexistence architecture has two major components:

- Central hardware Packet Traffic Arbiter (PTA): arbitrates between on-chip Wi-Fi and Bluetooth LE (RW610)—Bluetooth LE/802.15.4 (RW612)—radios.
 - All radios can be in 2.4 GHz.
 - Bluetooth LE (RW610)—Bluetooth LE/802.15.4 (RW612)— is in 2.4 GHz band, and Wi-Fi and the external radio are in 5 GHz band.
- Coexistence software: configures the central hardware PTA and works with Wi-Fi and Bluetooth LE (RW610)—Bluetooth LE/802.15.4 (RW612)—firmware.

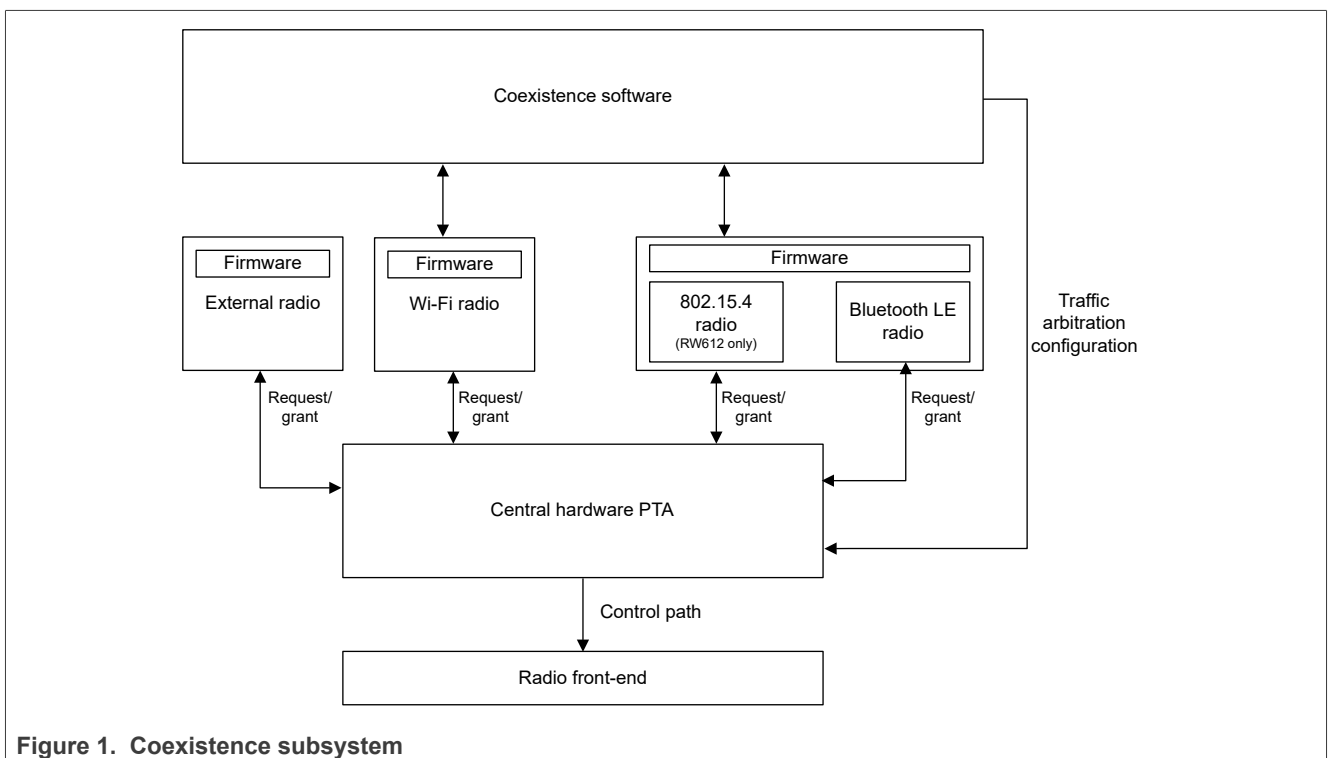


Figure 1. Coexistence subsystem

3 Coexistence mechanism

NXP's coexistence mechanism is a combination of interference avoidance and arbitration between Wi-Fi and Bluetooth LE (RW610)—Bluetooth LE/802.15.4 (RW612)—radios.

Interference avoidance between the Wi-Fi and Bluetooth LE (RW610)—Bluetooth LE/802.15.4 (RW612)—radios is achieved with frequency separation and/or isolation between the respective antennae.

The coordination between the Wi-Fi and Bluetooth LE radios helps Bluetooth LE to adapt the adaptive frequency hopping (AFH) map and avoid hopping into the Wi-Fi channel.

Unlike Bluetooth LE, 802.15.4 radio (RW612 only) operates on a fixed frequency based on the host configuration.

Note: *It is recommended that the host configures the 802.15.4 operating channel far from the Wi-Fi operating channel. The Bluetooth controller avoids the 802.15.4 channel by adapting its AFH map.*

In addition to interference avoidance, the central hardware PTA provides real-time arbitration between the Bluetooth LE (RW610)—Bluetooth LE/802.15.4 (RW612)—radios on a per-packet basis. This arbitration can be statically enabled/disabled. Each radio posts a request to the central hardware PTA to access the radio front-end. The hardware PTA grants access to each radio based on the configured priorities and on the grant rules.

3.1 Traffic priority

The traffic priority for each radio is assigned based on:

- The frame type and subtype of the Wi-Fi packets for Wi-Fi radio.
- The chosen profiles or operations for Bluetooth LE.
- The different operations for 802.15.4 (RW612 only).

The firmware statically configures the priorities for the traffic of Wi-Fi and Bluetooth LE (RW610)—Bluetooth LE/802.15.4 (RW612). The firmware also sets the arbitration rules in the central hardware PTA and local hardware arbiter.¹

3.2 Arbitration request to the central hardware PTA

To transmit or receive, the Wi-Fi subsystem asserts a request with traffic priority and traffic direction to the central hardware PTA arbiter.

The Bluetooth LE subsystem asserts a request to the central hardware PTA in order to transmit or receive. The request is accompanied with priority, traffic direction, and frequency information.

To transmit or receive, the 802.15.4 subsystem (RW612 only) asserts a request to the central hardware PTA. The request is accompanied with priority and traffic direction information.

¹ Any change to the current settings requires a firmware update.

3.3 Central hardware PTA grant rules

The central hardware PTA grants access based on the relative priority of the incoming requests when traffic collisions occur. This situation is illustrated in the following examples.

3.3.1 First example of traffic interference (RW612 only)

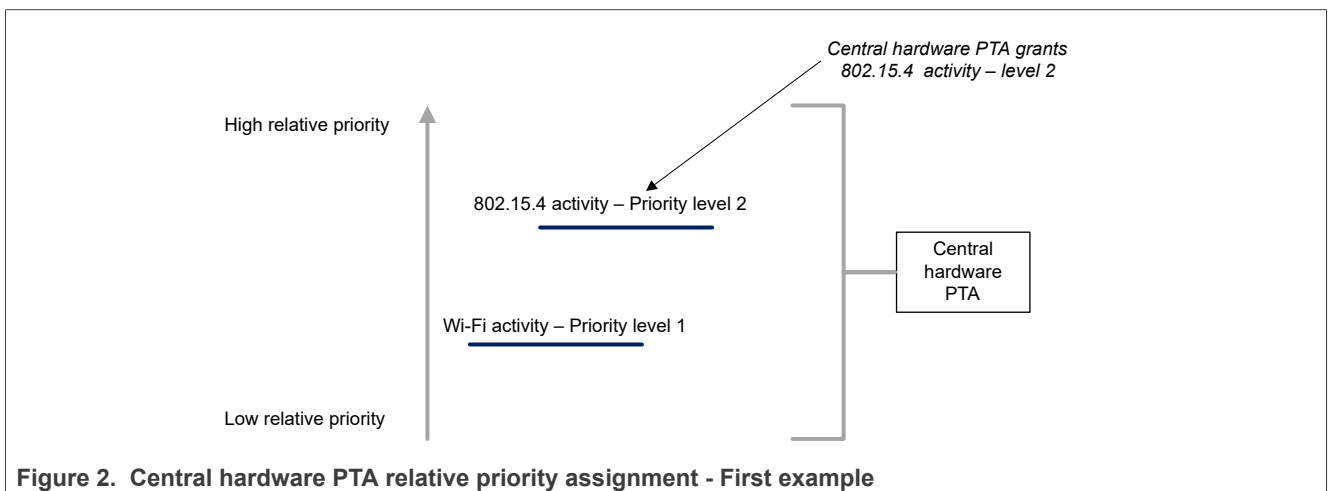
Context:

- Background ping on Wi-Fi radio
- Ping traffic on 802.15.4 radio

In this context, and as illustrated in [Figure 2](#);

- The Wi-Fi controller sets priority level 1 to Wi-Fi web-browsing traffic.
- The 802.15.4 controller sets priority level 2 to 802.15.4 ping traffic.

Relative priority assignment - Based on the relative priority assignment in PTA, 802.15.4 priority level 2 is higher compared to Wi-Fi priority level 1.



Conflict resolution:

- **Case 1:** The central hardware PTA grants the traffic access to 802.15.4 traffic. In this case, the central hardware PTA stops the Wi-Fi traffic that causes an interference/conflict.
- **Case 2:** The central hardware PTA grants the traffic access to Wi-Fi traffic when there is no interference/conflict with 802.15.4 traffic.

3.3.2 Second example of traffic interference

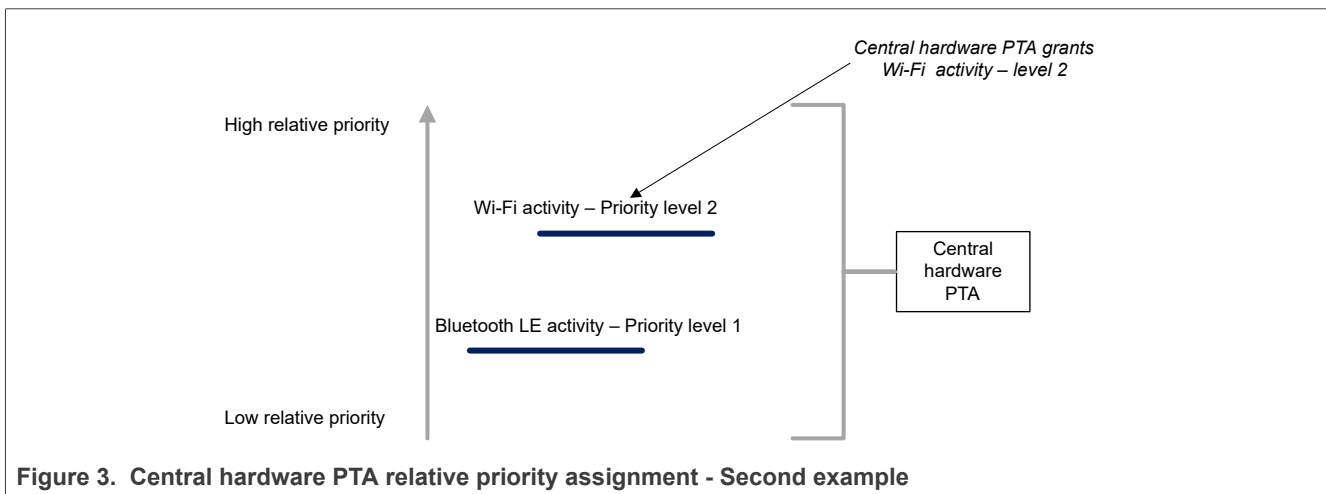
Context:

- Background ping on Wi-Fi radio
- Advertising of wireless UART service on Bluetooth LE radio

In this context, and as illustrated in [Figure 3](#);

- The Wi-Fi controller sets priority level 2 to Wi-Fi web-browsing traffic.
- The 802.15.4 controller sets priority level 1 to Bluetooth LE advertisement.

Relative priority assignment - Based on the relative priority assignment in PTA, Wi-Fi priority level 2 is higher compared to Bluetooth LE priority level 1.



Conflict resolution:

- **Case 1:** The central hardware PTA grants the traffic access to Wi-Fi. In this case, the central hardware PTA stops the Bluetooth LE traffic that causes an interference/conflict.
- **Case 2:** The central hardware PTA grants the access to Wi-Fi traffic when there is no interference/conflict with Bluetooth traffic.

4 Coexistence operating mode - Antenna configuration

4.1 Single-antenna configuration

[Table 1](#) shows the supported TX and/or RX operations in single-antenna configuration.

Table 1. Supported TX and or RX operations for Wi-Fi and Bluetooth LE (RW610)—Bluetooth LE or 802.15.4 (RW612)—in single-antenna configuration

Row #	Bluetooth LE (RW610) Bluetooth LE or 802.15.4 (RW612)	Wi-Fi 2.4 GHz	Wi-Fi 5 GHz
1	TX	—	TX/RX
2	—	TX	—
3	—	RX	—
4	RX	—	TX/RX

In single-antenna configuration:

- Wi-Fi 2.4 GHz and Bluetooth LE (RW610)—Bluetooth LE or 802.15.4 (RW612)—TX operations are arbitrated (rows 1 and 2).
- Wi-Fi 2.4 GHz and Bluetooth LE (RW610)—Bluetooth LE or 802.15.4 (RW612)—RX operations are arbitrated (rows 3 and 4).
- Wi-Fi 5 GHz TX/RX and Bluetooth LE (RW610)—Bluetooth LE or 802.15.4 (RW612)—RX or TX operations are simultaneous (rows 1 and 4).
- For RW612, only Bluetooth LE or 802.15.4 can perform TX or RX operation.

4.2 Dual-antenna configuration

The two separate antennas allow simultaneous independent operation of the Wi-Fi and Bluetooth LE (RW610)—Bluetooth LE/802.15.4 (RW612)—radios.

Table 2. Supported TX and or RX operations for Wi-Fi and Bluetooth LE (RW610) or Bluetooth LE/802.15.4 (RW612) radios in dual-antenna configuration

Bluetooth LE (RW610) Bluetooth LE or 802.15.4 (RW612)	Wi-Fi 2.4 GHz	Wi-Fi 5 GHz
TX/RX	TX/RX	—
TX/RX	—	TX/RX

In applications where Wi-Fi and Bluetooth LE (RW610)—Bluetooth LE/802.15.4 (RW612) have a dedicated antenna, the central hardware PTA arbitrates between the Wi-Fi and Bluetooth LE (RW610)—Bluetooth LE/802.15.4 (RW612)—radios. The need for arbitration between Wi-Fi and Bluetooth LE (RW610)—Bluetooth LE/802.15.4 (RW612)—radios depends on the antenna isolation, the target output powers levels for each radio, and the product operating environments.

5 Revision history

Table 3. Revision history

Document ID	Release date	Description
AN14121 v.2.0	1 November 2024	<ul style="list-style-type: none">Changed the access to public. No changes in the content.
AN14121 v.1.0	12 December 2023	<ul style="list-style-type: none">Initial version

Legal information

Definitions

Draft — A draft status on a document indicates that the content is still under internal review and subject to formal approval, which may result in modifications or additions. NXP Semiconductors does not give any representations or warranties as to the accuracy or completeness of information included in a draft version of a document and shall have no liability for the consequences of use of such information.

Disclaimers

Limited warranty and liability — Information in this document is believed to be accurate and reliable. However, NXP Semiconductors does not give any representations or warranties, expressed or implied, as to the accuracy or completeness of such information and shall have no liability for the consequences of use of such information. NXP Semiconductors takes no responsibility for the content in this document if provided by an information source outside of NXP Semiconductors.

In no event shall NXP Semiconductors be liable for any indirect, incidental, punitive, special or consequential damages (including - without limitation - lost profits, lost savings, business interruption, costs related to the removal or replacement of any products or rework charges) whether or not such damages are based on tort (including negligence), warranty, breach of contract or any other legal theory.

Notwithstanding any damages that customer might incur for any reason whatsoever, NXP Semiconductors' aggregate and cumulative liability towards customer for the products described herein shall be limited in accordance with the Terms and conditions of commercial sale of NXP Semiconductors.

Right to make changes — NXP Semiconductors reserves the right to make changes to information published in this document, including without limitation specifications and product descriptions, at any time and without notice. This document supersedes and replaces all information supplied prior to the publication hereof.

Suitability for use — NXP Semiconductors products are not designed, authorized or warranted to be suitable for use in life support, life-critical or safety-critical systems or equipment, nor in applications where failure or malfunction of an NXP Semiconductors product can reasonably be expected to result in personal injury, death or severe property or environmental damage. NXP Semiconductors and its suppliers accept no liability for inclusion and/or use of NXP Semiconductors products in such equipment or applications and therefore such inclusion and/or use is at the customer's own risk.

Applications — Applications that are described herein for any of these products are for illustrative purposes only. NXP Semiconductors makes no representation or warranty that such applications will be suitable for the specified use without further testing or modification.

Customers are responsible for the design and operation of their applications and products using NXP Semiconductors products, and NXP Semiconductors accepts no liability for any assistance with applications or customer product design. It is customer's sole responsibility to determine whether the NXP Semiconductors product is suitable and fit for the customer's applications and products planned, as well as for the planned application and use of customer's third party customer(s). Customers should provide appropriate design and operating safeguards to minimize the risks associated with their applications and products.

NXP Semiconductors does not accept any liability related to any default, damage, costs or problem which is based on any weakness or default in the customer's applications or products, or the application or use by customer's third party customer(s). Customer is responsible for doing all necessary testing for the customer's applications and products using NXP Semiconductors products in order to avoid a default of the applications and the products or of the application or use by customer's third party customer(s). NXP does not accept any liability in this respect.

Terms and conditions of commercial sale — NXP Semiconductors products are sold subject to the general terms and conditions of commercial sale, as published at <https://www.nxp.com/profile/terms>, unless otherwise agreed in a valid written individual agreement. In case an individual agreement is concluded only the terms and conditions of the respective agreement shall apply. NXP Semiconductors hereby expressly objects to applying the customer's general terms and conditions with regard to the purchase of NXP Semiconductors products by customer.

Export control — This document as well as the item(s) described herein may be subject to export control regulations. Export might require a prior authorization from competent authorities.

Suitability for use in non-automotive qualified products — Unless this document expressly states that this specific NXP Semiconductors product is automotive qualified, the product is not suitable for automotive use. It is neither qualified nor tested in accordance with automotive testing or application requirements. NXP Semiconductors accepts no liability for inclusion and/or use of non-automotive qualified products in automotive equipment or applications.

In the event that customer uses the product for design-in and use in automotive applications to automotive specifications and standards, customer (a) shall use the product without NXP Semiconductors' warranty of the product for such automotive applications, use and specifications, and (b) whenever customer uses the product for automotive applications beyond NXP Semiconductors' specifications such use shall be solely at customer's own risk, and (c) customer fully indemnifies NXP Semiconductors for any liability, damages or failed product claims resulting from customer design and use of the product for automotive applications beyond NXP Semiconductors' standard warranty and NXP Semiconductors' product specifications.

HTML publications — An HTML version, if available, of this document is provided as a courtesy. Definitive information is contained in the applicable document in PDF format. If there is a discrepancy between the HTML document and the PDF document, the PDF document has priority.

Translations — A non-English (translated) version of a document, including the legal information in that document, is for reference only. The English version shall prevail in case of any discrepancy between the translated and English versions.

Security — Customer understands that all NXP products may be subject to unidentified vulnerabilities or may support established security standards or specifications with known limitations. Customer is responsible for the design and operation of its applications and products throughout their lifecycles to reduce the effect of these vulnerabilities on customer's applications and products. Customer's responsibility also extends to other open and/or proprietary technologies supported by NXP products for use in customer's applications. NXP accepts no liability for any vulnerability. Customer should regularly check security updates from NXP and follow up appropriately. Customer shall select products with security features that best meet rules, regulations, and standards of the intended application and make the ultimate design decisions regarding its products and is solely responsible for compliance with all legal, regulatory, and security related requirements concerning its products, regardless of any information or support that may be provided by NXP.

NXP has a Product Security Incident Response Team (PSIRT) (reachable at PSIRT@nxp.com) that manages the investigation, reporting, and solution release to security vulnerabilities of NXP products.

NXP B.V. — NXP B.V. is not an operating company and it does not distribute or sell products.

Trademarks

Notice: All referenced brands, product names, service names, and trademarks are the property of their respective owners.

NXP — wordmark and logo are trademarks of NXP B.V.

Bluetooth — the Bluetooth wordmark and logos are registered trademarks owned by Bluetooth SIG, Inc. and any use of such marks by NXP Semiconductors is under license.

Tables

Tab. 1.	Supported TX and or RX operations for Wi-Fi and Bluetooth LE (RW610)—Bluetooth LE or 802.15.4 (RW612)—in single-antenna configuration 7	Tab. 2.	Supported TX and or RX operations for Wi-Fi and Bluetooth LE (RW610) or Bluetooth LE/802.15.4 (RW612) radios in dual-antenna configuration 7
		Tab. 3.	Revision history 8

Figures

Fig. 1. Coexistence subsystem 3

Fig. 2. Central hardware PTA relative priority assignment - First example5

Fig. 3. Central hardware PTA relative priority assignment - Second example6

Contents

1	Scope	2
2	Coexistence architecture overview	3
3	Coexistence mechanism	4
3.1	Traffic priority	4
3.2	Arbitration request to the central hardware PTA	4
3.3	Central hardware PTA grant rules	5
3.3.1	First example of traffic interference (RW612 only)	5
3.3.2	Second example of traffic interference	6
4	Coexistence operating mode - Antenna configuration	7
4.1	Single-antenna configuration	7
4.2	Dual-antenna configuration	7
5	Revision history	8
	Legal information	9

Please be aware that important notices concerning this document and the product(s) described herein, have been included in section 'Legal information'.
