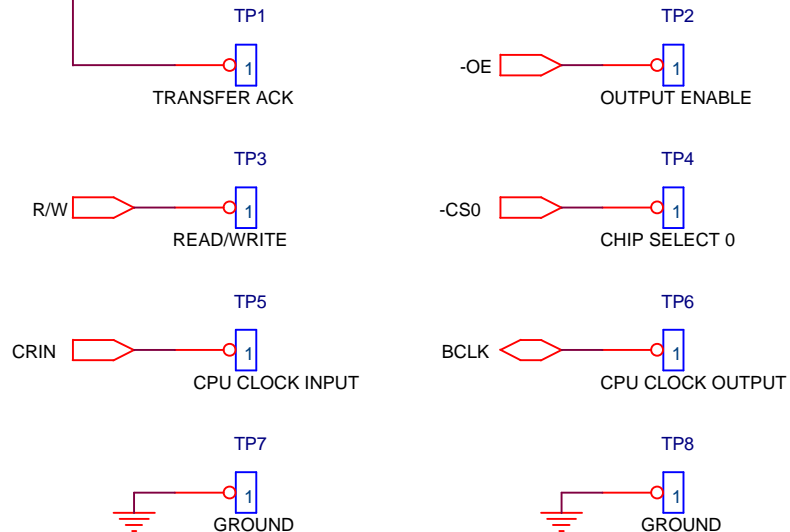
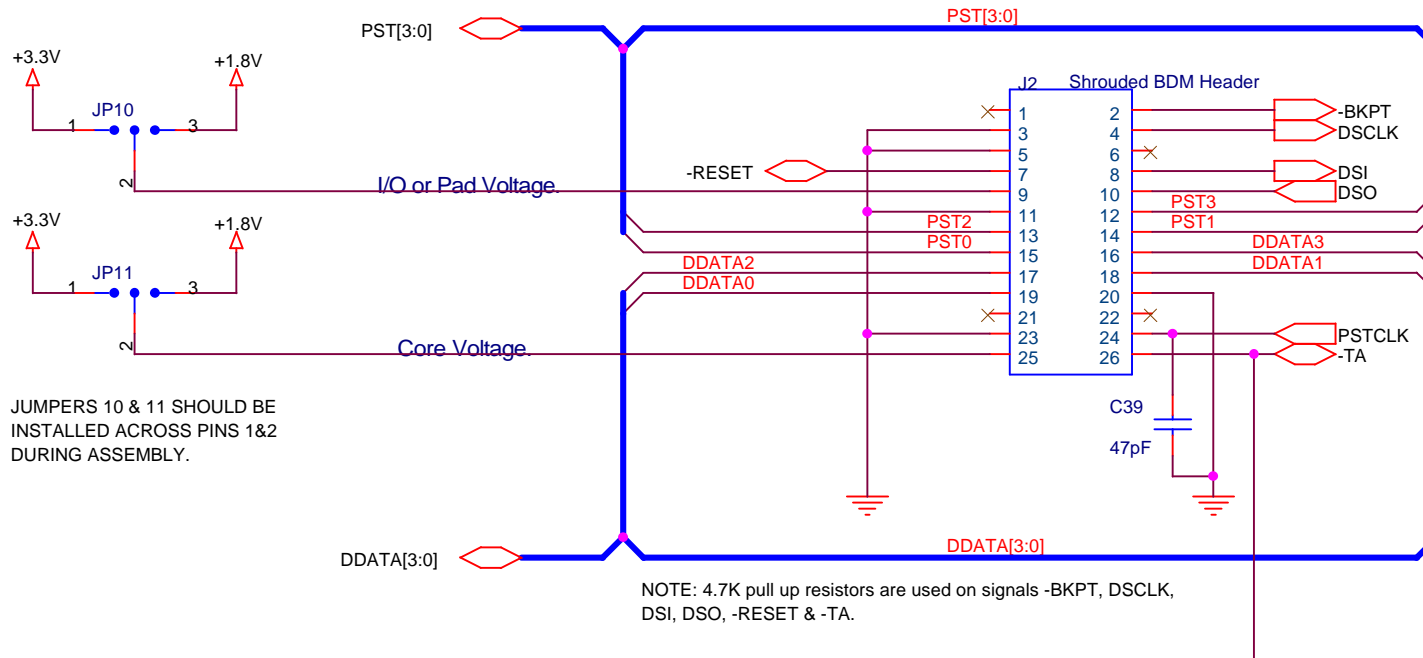


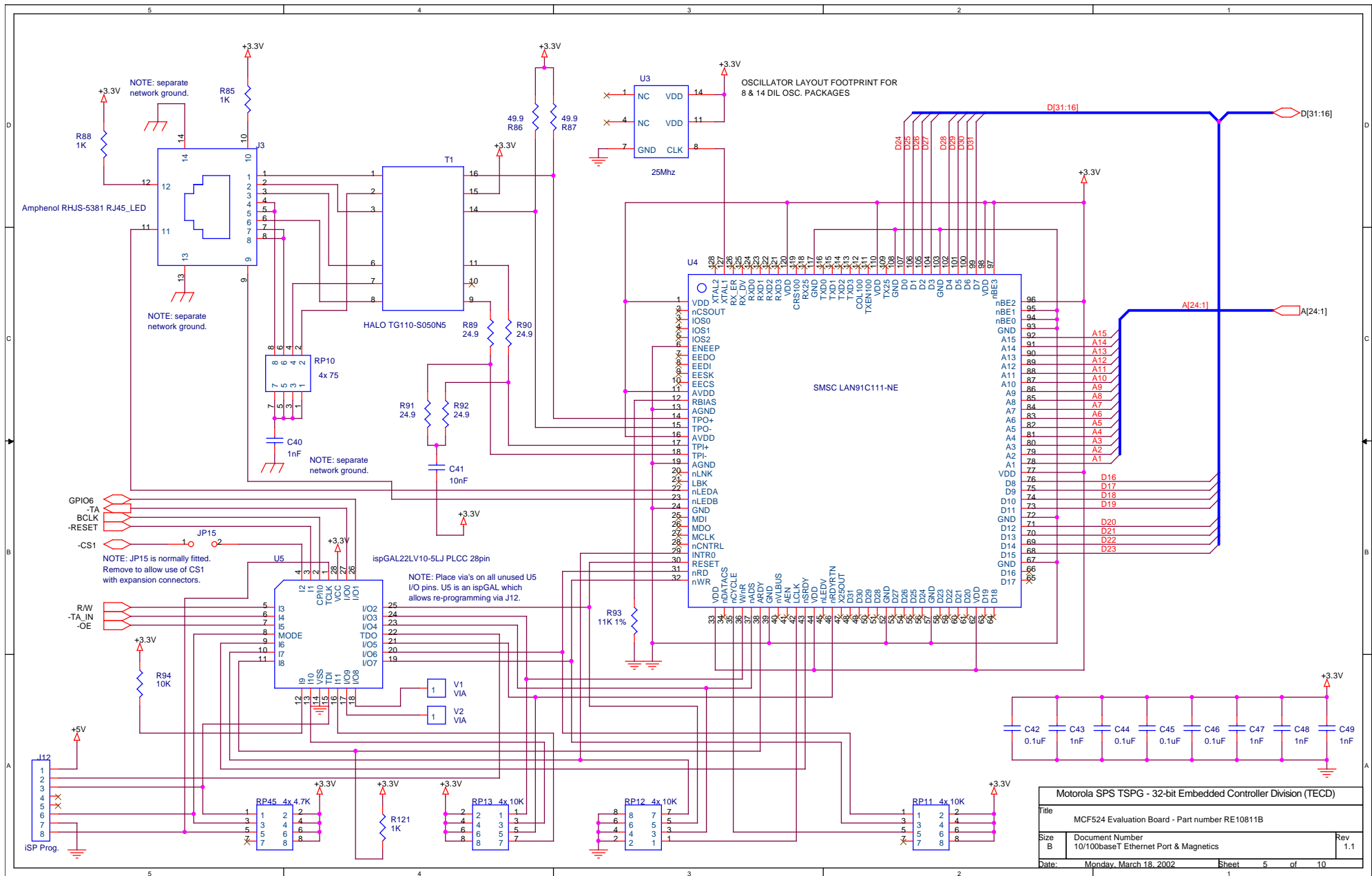
Motorola SPS TSPG - 32-bit Embedded Controller Division (TECD)			
File	MCF5249 Evaluation Board - Part number RE10811B		
Size	Document Number	MCF5249 CPU and Pull-ups	
C	Rev	1.1	
Date	Tuesday, March 19, 2002	Sheet	3 of 10



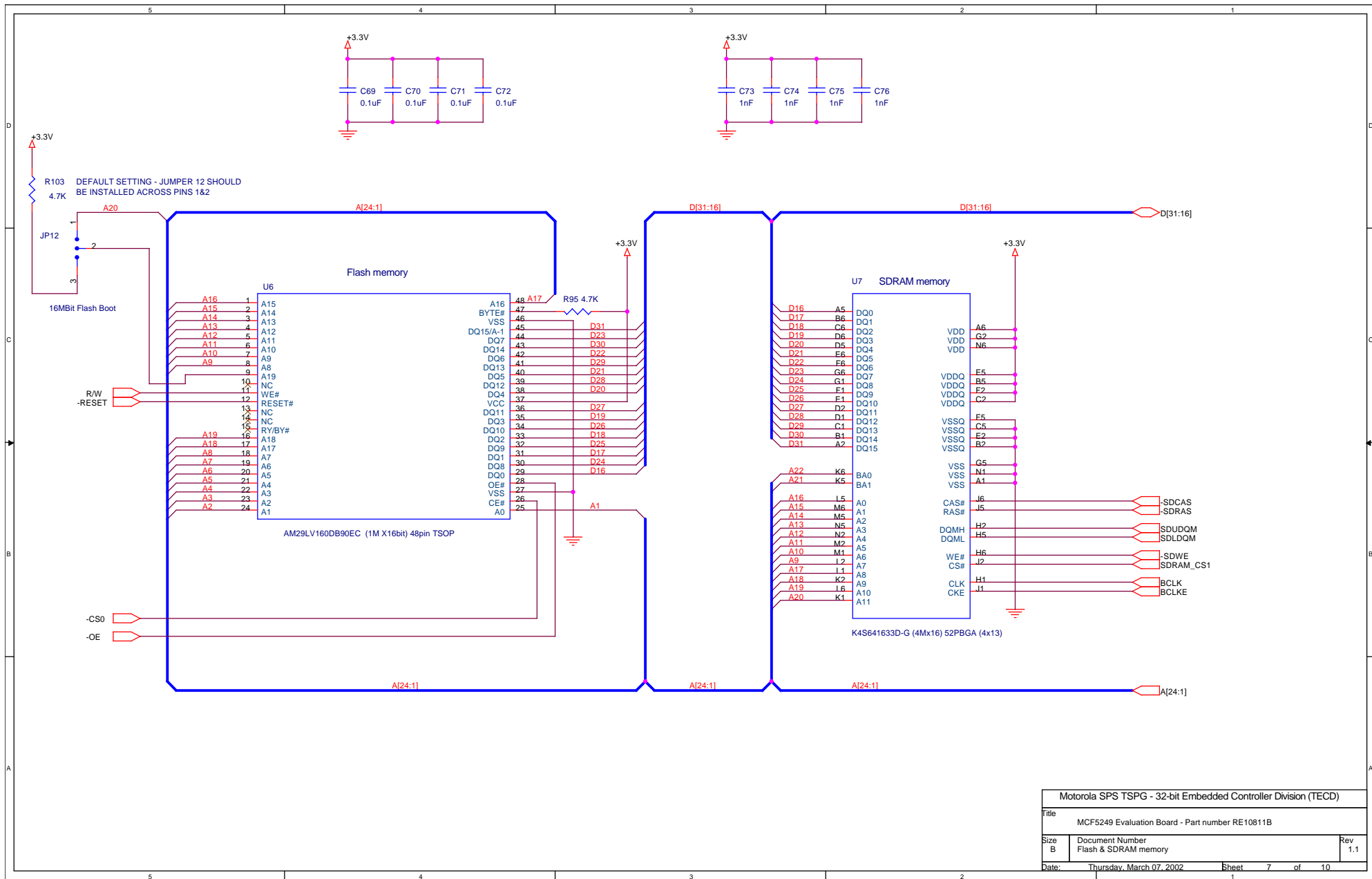
NOTE: Test Points TP1 to TP6 are only populated on prototype boards. Please use the label shown for each test point on the silkscreen of the PCB.

NOTE: Place TP7 & TP8 at the corners of the PCB to allow easy connection of 'scope probe ground leads. These test points are fitted for both prototype and production boards.

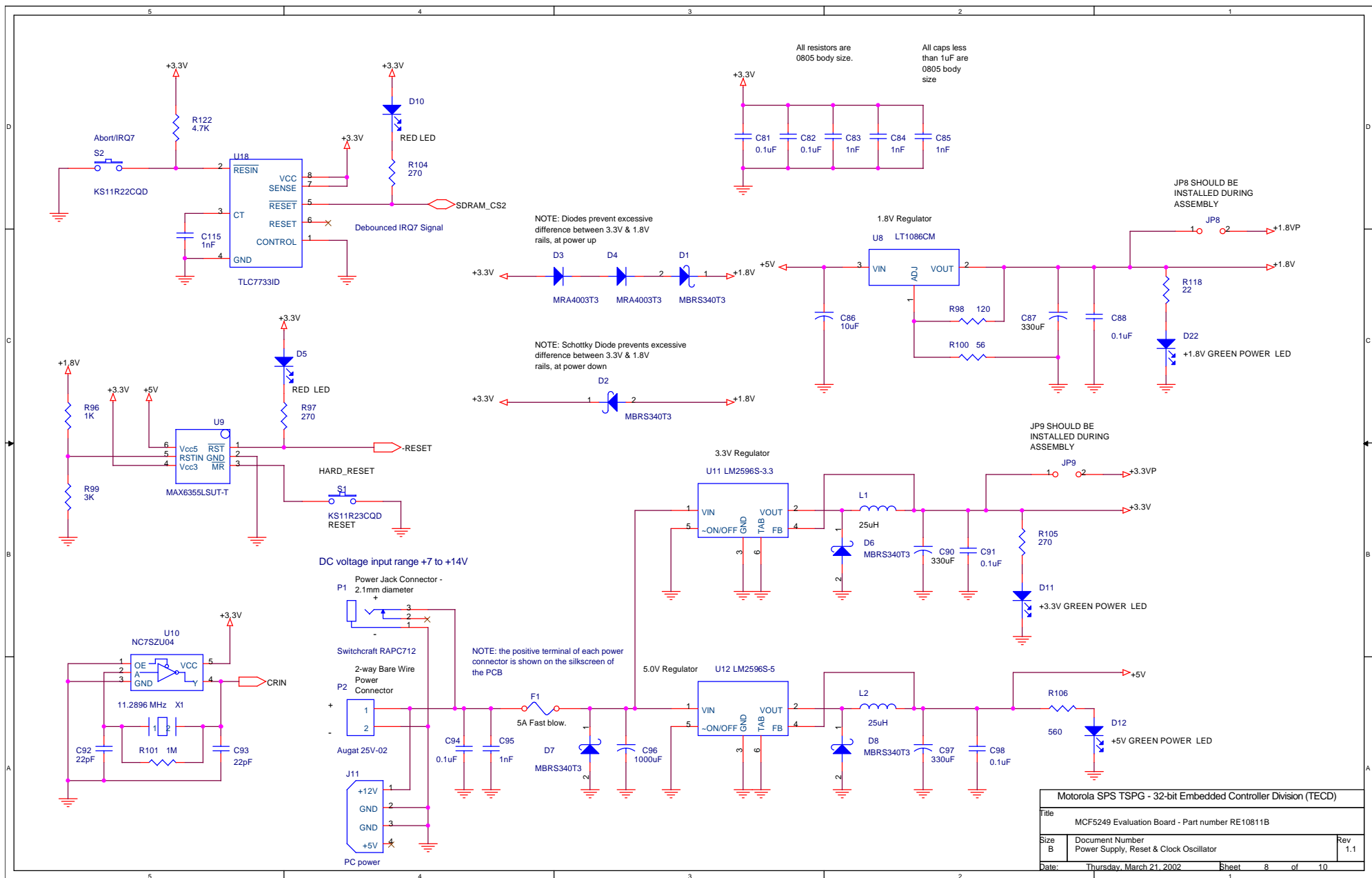
Motorola SPS TSPG - 32-bit Embedded Controller Division (TECD)		
Title		
MCF5249 Evaluation Board - Part number RE10811B		
Size	Document Number	Rev
A	Debug (BDM) Port & Test Points	1.1
Date:	Thursday, March 07, 2002	Sheet 4 of 10



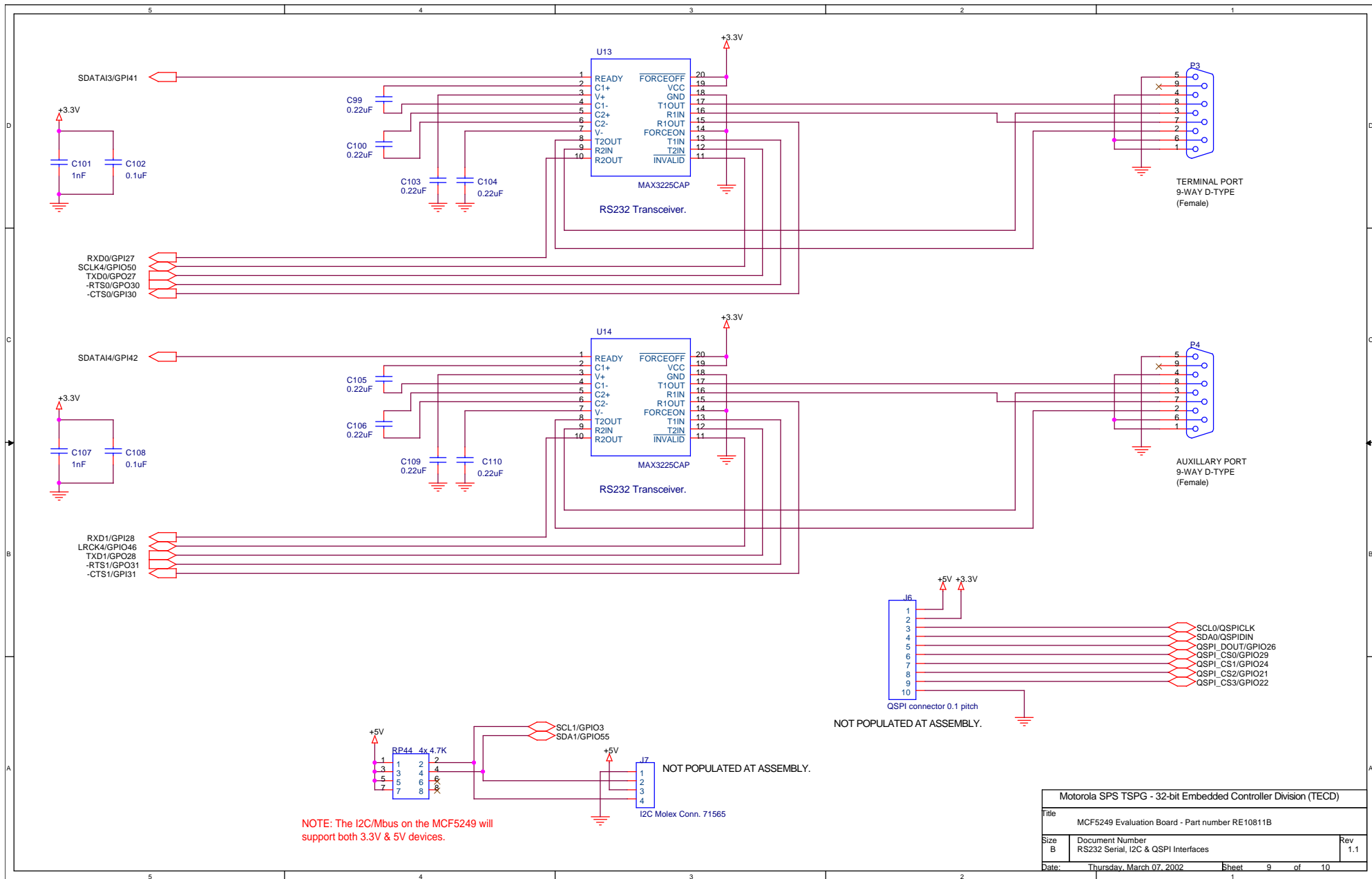




Motorola SPS TSPG - 32-bit Embedded Controller Division (TECD)			
Title		MCF5249 Evaluation Board - Part number RE10811B	
Size	Document Number	Rev	
B	Flash & SDRAM memory	1.1	
Date:	Thursday, March 07, 2002	Sheet	7 of 10







Motorola SPS TSPG - 32-bit Embedded Controller Division (TECD)			
Title	MCF5249 Evaluation Board - Part number RE10811B		
Size B	Document Number	Rev	
	RS232 Serial, I2C & QSPI Interfaces	1.1	
Date:	Thursday, March 07, 2002	Sheet	9 of 10

