

Test Report

No.: ETR21301076

Date: 09-Mar-2021

Page: 1 of 37

MITSUBISHI GAS CHEMICAL CO., INC. ELECTRONICS MATERIAL DIVISION
5-2, MARUNOUCHI 2-CHOME, CHIYODA-KU, TOKYO 100-8324, JAPAN

The following sample(s) was/were submitted and identified by/on behalf of the applicant as:

Sample Submitted By : MITSUBISHI GAS CHEMICAL CO., INC. ELECTRONICS MATERIAL DIVISION
Sample Name : COPPER FOIL
Style/Item No. : COPPER FOIL- 1
Lot No. : MGC2021-007

=====
Sample Receiving Date : 03-Mar-2021
Testing Period : 03-Mar-2021 to 09-Mar-2021

Test Requested : (1) As specified by client, with reference to RoHS 2011/65/EU Annex II and amending Directive (EU) 2015/863 to determine Cadmium, Lead, Mercury, Cr(VI), PBBs, PBDEs, DBP, BBP, DEHP, DIBP contents in the submitted sample(s).
(2) Please refer to next pages for the other item(s).

Test Results : Please refer to following pages.

Conclusion : (1) Based on the performed tests on submitted sample(s), the test results of Cadmium, Lead, Mercury, Cr(VI), PBBs, PBDEs, DBP, BBP, DEHP, DIBP comply with the limits as set by RoHS Directive (EU) 2015/863 amending Annex II to Directive 2011/65/EU.


Troy Chang, Manager
Signed for and on behalf of
SGS TAIWAN LTD.
Chemical Laboratory - Taipei



PIN CODE: 44E16933

This document is issued by the Company subject to its General Conditions of Service printed overleaf, available on request or accessible at <https://www.sgs.com.tw/terms-of-service> and, for electronic format documents, subject to Terms and Conditions for Electronic Documents at <https://www.sgs.com.tw/terms-of-service>. Attention is drawn to the limitation of liability, indemnification and jurisdiction issues defined therein. Any holder of this document is advised that information contained hereon reflects the Company's findings at the time of its intervention only and within the limits of client's instruction, if any. The Company's sole responsibility is to its Client and this document does not exonerate parties to a transaction from exercising all their rights and obligations under the transaction documents. This document cannot be reproduced, except in full, without prior written approval of the Company. Any unauthorized alteration, forgery or falsification of the content or appearance of this document is unlawful and offenders may be prosecuted to the fullest extent of the law. Unless otherwise stated the results shown in this test report refer only to the sample(s) tested.

Test Report

No.: ETR21301076

Date: 09-Mar-2021

Page: 2 of 37

MITSUBISHI GAS CHEMICAL CO., INC. ELECTRONICS MATERIAL DIVISION
5-2, MARUNOUCHI 2-CHOME, CHIYODA-KU, TOKYO 100-8324, JAPAN

Test Part Description

No.1 : COPPER/PINK FOIL

Test Result(s)

Test Item(s)	Method	Unit	MDL	Result	Limit
				No.1	
Cadmium (Cd) (CAS No.: 7440-43-9)	With reference to IEC 62321-5: 2013, analysis was performed by ICP-OES.	mg/kg	2	n.d.	100
Lead (Pb) (CAS No.: 7439-92-1)	With reference to IEC 62321-5: 2013, analysis was performed by ICP-OES.	mg/kg	2	n.d.	1000
Mercury (Hg) (CAS No.: 7439-97-6)	With reference to IEC 62321-4: 2013+AMD1: 2017, analysis was performed by ICP-OES.	mg/kg	2	n.d.	1000
Hexavalent Chromium Cr(VI) (CAS No.: 18540-29-9)	With reference to IEC 62321-7-1: 2015, analysis was performed by UV-VIS.	µg/cm ²	0.1	n.d.	-
Monobromobiphenyl	With reference to IEC 62321-6: 2015, analysis was performed by GC/MS.	mg/kg	5	n.d.	-
Dibromobiphenyl		mg/kg	5	n.d.	-
Tribromobiphenyl		mg/kg	5	n.d.	-
Tetrabromobiphenyl		mg/kg	5	n.d.	-
Pentabromobiphenyl		mg/kg	5	n.d.	-
Hexabromobiphenyl		mg/kg	5	n.d.	-
Heptabromobiphenyl		mg/kg	5	n.d.	-
Octabromobiphenyl		mg/kg	5	n.d.	-
Nonabromobiphenyl		mg/kg	5	n.d.	-
Decabromobiphenyl		mg/kg	5	n.d.	-
Sum of PBBs		mg/kg	-	n.d.	1000
Monobromodiphenyl ether		mg/kg	5	n.d.	-
Dibromodiphenyl ether		mg/kg	5	n.d.	-
Tribromodiphenyl ether		mg/kg	5	n.d.	-
Tetrabromodiphenyl ether		mg/kg	5	n.d.	-
Pentabromodiphenyl ether		mg/kg	5	n.d.	-
Hexabromodiphenyl ether		mg/kg	5	n.d.	-
Heptabromodiphenyl ether		mg/kg	5	n.d.	-
Octabromodiphenyl ether		mg/kg	5	n.d.	-
Nonabromodiphenyl ether		mg/kg	5	n.d.	-
Decabromodiphenyl ether	mg/kg	5	n.d.	-	
Sum of PBDEs	mg/kg	-	n.d.	1000	

This document is issued by the Company subject to its General Conditions of Service printed overleaf, available on request or accessible at <https://www.sgs.com.tw/terms-of-service> and, for electronic format documents, subject to Terms and Conditions for Electronic Documents at <https://www.sgs.com.tw/terms-of-service>. Attention is drawn to the limitation of liability, indemnification and jurisdiction issues defined therein. Any holder of this document is advised that information contained hereon reflects the Company's findings at the time of its intervention only and within the limits of client's instruction, if any. The Company's sole responsibility is to its Client and this document does not exonerate parties to a transaction from exercising all their rights and obligations under the transaction documents. This document cannot be reproduced, except in full, without prior written approval of the Company. Any unauthorized alteration, forgery or falsification of the content or appearance of this document is unlawful and offenders may be prosecuted to the fullest extent of the law. Unless otherwise stated the results shown in this test report refer only to the sample(s) tested.

MITSUBISHI GAS CHEMICAL CO., INC. ELECTRONICS MATERIAL DIVISION
 5-2, MARUNOUCHI 2-CHOME, CHIYODA-KU, TOKYO 100-8324, JAPAN

Test Item(s)	Method	Unit	MDL	Result	Limit
				No.1	
Tetrabromobisphenol A (TBBP-A) (CAS No.: 79-94-7)	With reference to RSTS-E&E-121, analysis was performed by LC/MS.	mg/kg	10	n.d.	-
Polychlorinated biphenyls (PCBs)	With reference to US EPA 3550C: 2007, analysis was performed by GC/MS.	mg/kg	0.5	n.d.	-
Polychlorinated naphthalene (PCNs)	With reference to US EPA 3550C: 2007, analysis was performed by GC/MS.	mg/kg	5	n.d.	-
Polychlorinated terphenyls (PCTs)	With reference to US EPA 3550C: 2007, analysis was performed by GC/MS.	mg/kg	0.5	n.d.	-
Short Chain Chlorinated Paraffins(C10-C13) (SCCP) (CAS No.: 85535-84-8)	With reference to ISO 18219: 2015, analysis was performed by GC/MS.	mg/kg	50	n.d.	-
Tributyl tin (TBT)	With reference to ISO 17353: 2004, analysis was performed by GC/FPD.	mg/kg	0.03	n.d.	-
Bis(tributyltin) oxide (TBTO) (CAS No.: 56-35-9)	Calculated from the result of Tributyl Tin (TBT).	mg/kg	0.03 ▲	n.d.	-
Triphenyl tin (TPHT)	With reference to ISO 17353: 2004, analysis was performed by GC/FPD.	mg/kg	0.03	n.d.	-
Polyvinyl chloride (PVC)	With reference to ASTM E1252: 2013, analysis was performed by FT-IR and Flame Test.	**	-	Negative	-
Asbestos					
Actinolite (CAS No.: 77536-66-4)	With reference to EPA 600/R-93/116: 1993, analysis was performed by Stereo Microscope (SM), Dispersion Staining Polarized Light Microscope (DS-PLM) and X-ray Diffraction Spectrometer (XRD).	%	-	Negative	-
Amosite (CAS No.: 12172-73-5)		%	-	Negative	-
Anthophyllite (CAS No.: 77536-67-5)		%	-	Negative	-
Chrysotile (CAS No.: 12001-29-5)		%	-	Negative	-
Crocidolite (CAS No.: 12001-28-4)		%	-	Negative	-
Tremolite (CAS No.: 77536-68-6)		%	-	Negative	-
AZO Dyes					
4-aminodiphenyl (CAS No.: 92-67-1)	With reference to EN ISO 14362-1: 2017, analysis was performed by GC/MS and HPLC/DAD.	mg/kg	3	n.d.	-

This document is issued by the Company subject to its General Conditions of Service printed overleaf, available on request or accessible at <https://www.sgs.com.tw/terms-of-service> and, for electronic format documents, subject to Terms and Conditions for Electronic Documents at <https://www.sgs.com.tw/terms-of-service>. Attention is drawn to the limitation of liability, indemnification and jurisdiction issues defined therein. Any holder of this document is advised that information contained hereon reflects the Company's findings at the time of its intervention only and within the limits of client's instruction, if any. The Company's sole responsibility is to its Client and this document does not exonerate parties to a transaction from exercising all their rights and obligations under the transaction documents. This document cannot be reproduced, except in full, without prior written approval of the Company. Any unauthorized alteration, forgery or falsification of the content or appearance of this document is unlawful and offenders may be prosecuted to the fullest extent of the law. Unless otherwise stated the results shown in this test report refer only to the sample(s) tested.

Test Report

No.: ETR21301076

Date: 09-Mar-2021

Page: 4 of 37

MITSUBISHI GAS CHEMICAL CO., INC. ELECTRONICS MATERIAL DIVISION
5-2, MARUNOUCHI 2-CHOME, CHIYODA-KU, TOKYO 100-8324, JAPAN

Test Item(s)	Method	Unit	MDL	Result	Limit
				No.1	
Benzidine (CAS No.: 92-87-5)	With reference to EN ISO 14362-1: 2017, analysis was performed by GC/MS and HPLC/DAD.	mg/kg	3	n.d.	-
4-chloro-o-toluidine (CAS No.: 95-69-2)	With reference to EN ISO 14362-1: 2017, analysis was performed by GC/MS and HPLC/DAD.	mg/kg	3	n.d.	-
2-naphthylamine (CAS No.: 91-59-8)	With reference to EN ISO 14362-1: 2017, analysis was performed by GC/MS and HPLC/DAD.	mg/kg	3	n.d.	-
o-aminoazotoluene (CAS No.: 97-56-3)	With reference to EN ISO 14362-1: 2017, analysis was performed by GC/MS and HPLC/DAD.	mg/kg	3	n.d.	-
5-nitro-o-toluidine (CAS No.: 99-55-8)	With reference to EN ISO 14362-1: 2017, analysis was performed by GC/MS and HPLC/DAD.	mg/kg	3	n.d.	-
4-chloroaniline (CAS No.: 106-47-8)	With reference to EN ISO 14362-1: 2017, analysis was performed by GC/MS and HPLC/DAD.	mg/kg	3	n.d.	-
2,4-diaminoanisole (CAS No.: 615-05-4)	With reference to EN ISO 14362-1: 2017, analysis was performed by GC/MS and HPLC/DAD.	mg/kg	3	n.d.	-
4,4'-diaminodiphenylmethane (MDA) (CAS No.: 101-77-9)	With reference to EN ISO 14362-1: 2017, analysis was performed by GC/MS and HPLC/DAD.	mg/kg	3	n.d.	-
3,3'-dichlorobenzidine (CAS No.: 91-94-1)	With reference to EN ISO 14362-1: 2017, analysis was performed by GC/MS and HPLC/DAD.	mg/kg	3	n.d.	-
3,3'-dimethoxybenzidine (CAS No.: 119-90-4)	With reference to EN ISO 14362-1: 2017, analysis was performed by GC/MS and HPLC/DAD.	mg/kg	3	n.d.	-
3,3'-dimethylbenzidine (CAS No.: 119-93-7)	With reference to EN ISO 14362-1: 2017, analysis was performed by GC/MS and HPLC/DAD.	mg/kg	3	n.d.	-
3,3'-dimethyl-4,4'-diaminodiphenylmethane (CAS No.: 838-88-0)	With reference to EN ISO 14362-1: 2017, analysis was performed by GC/MS and HPLC/DAD.	mg/kg	3	n.d.	-

This document is issued by the Company subject to its General Conditions of Service printed overleaf, available on request or accessible at <https://www.sgs.com.tw/terms-of-service> and, for electronic format documents, subject to Terms and Conditions for Electronic Documents at <https://www.sgs.com.tw/terms-of-service>. Attention is drawn to the limitation of liability, indemnification and jurisdiction issues defined therein. Any holder of this document is advised that information contained hereon reflects the Company's findings at the time of its intervention only and within the limits of client's instruction, if any. The Company's sole responsibility is to its Client and this document does not exonerate parties to a transaction from exercising all their rights and obligations under the transaction documents. This document cannot be reproduced, except in full, without prior written approval of the Company. Any unauthorized alteration, forgery or falsification of the content or appearance of this document is unlawful and offenders may be prosecuted to the fullest extent of the law. Unless otherwise stated the results shown in this test report refer only to the sample(s) tested.

Test Report

No.: ETR21301076

Date: 09-Mar-2021

Page: 5 of 37

MITSUBISHI GAS CHEMICAL CO., INC. ELECTRONICS MATERIAL DIVISION
5-2, MARUNOUCHI 2-CHOME, CHIYODA-KU, TOKYO 100-8324, JAPAN

Test Item(s)	Method	Unit	MDL	Result	Limit
				No.1	
2-methoxy-5-methylaniline (CAS No.: 120-71-8)	With reference to EN ISO 14362-1: 2017, analysis was performed by GC/MS and HPLC/DAD.	mg/kg	3	n.d.	-
4,4'-methylene-bis-(2-chloroaniline) (CAS No.: 101-14-4)	With reference to EN ISO 14362-1: 2017, analysis was performed by GC/MS and HPLC/DAD.	mg/kg	3	n.d.	-
4,4'-oxydianiline (CAS No.: 101-80-4)	With reference to EN ISO 14362-1: 2017, analysis was performed by GC/MS and HPLC/DAD.	mg/kg	3	n.d.	-
4,4'-thiodianiline (CAS No.: 139-65-1)	With reference to EN ISO 14362-1: 2017, analysis was performed by GC/MS and HPLC/DAD.	mg/kg	3	n.d.	-
o-toluidine (CAS No.: 95-53-4)	With reference to EN ISO 14362-1: 2017, analysis was performed by GC/MS and HPLC/DAD.	mg/kg	3	n.d.	-
2,4-diaminotoluene (CAS No.: 95-80-7)	With reference to EN ISO 14362-1: 2017, analysis was performed by GC/MS and HPLC/DAD.	mg/kg	3	n.d.	-
2,4,5-trimethylaniline (CAS No.: 137-17-7)	With reference to EN ISO 14362-1: 2017, analysis was performed by GC/MS and HPLC/DAD.	mg/kg	3	n.d.	-
o-anisidine (CAS No.: 90-04-0)	With reference to EN ISO 14362-1: 2017, analysis was performed by GC/MS and HPLC/DAD.	mg/kg	3	n.d.	-
4-aminoazobenzene (CAS No.: 60-09-3)	With reference to EN ISO 14362-1: 2017 or/and EN ISO 14362-3: 2017, analysis was performed by GC/MS & HPLC/DAD.	mg/kg	3	n.d.	-
2,4-xylidine (CAS No.: 95-68-1)	With reference to EN ISO 14362-1: 2017, analysis was performed by GC/MS and HPLC/DAD.	mg/kg	3	n.d.	-
2,6-xylidine (CAS No.: 87-62-7)	With reference to EN ISO 14362-1: 2017, analysis was performed by GC/MS and HPLC/DAD.	mg/kg	3	n.d.	-

This document is issued by the Company subject to its General Conditions of Service printed overleaf, available on request or accessible at <https://www.sgs.com.tw/terms-of-service> and, for electronic format documents, subject to Terms and Conditions for Electronic Documents at <https://www.sgs.com.tw/terms-of-service>. Attention is drawn to the limitation of liability, indemnification and jurisdiction issues defined therein. Any holder of this document is advised that information contained hereon reflects the Company's findings at the time of its intervention only and within the limits of client's instruction, if any. The Company's sole responsibility is to its Client and this document does not exonerate parties to a transaction from exercising all their rights and obligations under the transaction documents. This document cannot be reproduced, except in full, without prior written approval of the Company. Any unauthorized alteration, forgery or falsification of the content or appearance of this document is unlawful and offenders may be prosecuted to the fullest extent of the law. Unless otherwise stated the results shown in this test report refer only to the sample(s) tested.

MITSUBISHI GAS CHEMICAL CO., INC. ELECTRONICS MATERIAL DIVISION
 5-2, MARUNOUCHI 2-CHOME, CHIYODA-KU, TOKYO 100-8324, JAPAN

Test Item(s)	Method	Unit	MDL	Result	Limit
				No.1	
Dibutyl phthalate (DBP) (CAS No.: 84-74-2)	With reference to IEC 62321-8: 2017, analysis was performed by GC/MS.	mg/kg	50	n.d.	1000
Butyl benzyl phthalate (BBP) (CAS No.: 85-68-7)	With reference to IEC 62321-8: 2017, analysis was performed by GC/MS.	mg/kg	50	n.d.	1000
Di-(2-ethylhexyl) phthalate (DEHP) (CAS No.: 117-81-7)	With reference to IEC 62321-8: 2017, analysis was performed by GC/MS.	mg/kg	50	n.d.	1000
Diisobutyl phthalate (DIBP) (CAS No.: 84-69-5)	With reference to IEC 62321-8: 2017, analysis was performed by GC/MS.	mg/kg	50	n.d.	1000
Diisodecyl phthalate (DIDP) (CAS No.: 26761-40-0, 68515-49-1)	With reference to IEC 62321-8: 2017, analysis was performed by GC/MS.	mg/kg	50	n.d.	-
Diisononyl phthalate (DINP) (CAS No.: 28553-12-0, 68515-48-0)	With reference to IEC 62321-8: 2017, analysis was performed by GC/MS.	mg/kg	50	n.d.	-
Di-n-octyl phthalate (DNOP) (CAS No.: 117-84-0)	With reference to IEC 62321-8: 2017, analysis was performed by GC/MS.	mg/kg	50	n.d.	-
Di-ethyl phthalate (DEP) (CAS No.: 84-66-2)	With reference to IEC 62321-8: 2017, analysis was performed by GC/MS.	mg/kg	50	n.d.	-
Dimethyl phthalate (DMP) (CAS No.: 131-11-3)	With reference to IEC 62321-8: 2017, analysis was performed by GC/MS.	mg/kg	50	n.d.	-
Diisooctyl phthalate (DIOP) (CAS No.: 27554-26-3)	With reference to IEC 62321-8: 2017, analysis was performed by GC/MS.	mg/kg	50	n.d.	-
Dipropyl phthalate (DPrP) (CAS No.: 131-16-8)	With reference to IEC 62321-8: 2017, analysis was performed by GC/MS.	mg/kg	50	n.d.	-
Di-cyclohexyl phthalate (DCHP) (CAS No.: 84-61-7)	With reference to IEC 62321-8: 2017, analysis was performed by GC/MS.	mg/kg	50	n.d.	-
Di-n-nonyl phthalate (DNNP) (CAS No.: 84-76-4)	With reference to IEC 62321-8: 2017, analysis was performed by GC/MS.	mg/kg	50	n.d.	-
Di-2-ethylhexyl adipate (DEHA) (CAS No.: 103-23-1)	With reference to IEC 62321-8: 2017, analysis was performed by GC/MS.	mg/kg	50	n.d.	-
Di-n-pentyl phthalate (DNPP) (CAS No.: 131-18-0)	With reference to IEC 62321-8: 2017, analysis was performed by GC/MS.	mg/kg	50	n.d.	-
Di-n-hexyl phthalate (DNHP) (CAS No.: 84-75-3)	With reference to IEC 62321-8: 2017, analysis was performed by GC/MS.	mg/kg	50	n.d.	-
Di-n-heptyl phthalate (CAS No.: 3648-21-3)	With reference to IEC 62321-8: 2017, analysis was performed by GC/MS.	mg/kg	50	n.d.	-
Undecyl dodecyl phthalate (CAS No.: 68515-47-9)	With reference to IEC 62321-8: 2017, analysis was performed by GC/MS.	mg/kg	50	n.d.	-

This document is issued by the Company subject to its General Conditions of Service printed overleaf, available on request or accessible at <https://www.sgs.com.tw/terms-of-service> and, for electronic format documents, subject to Terms and Conditions for Electronic Documents at <https://www.sgs.com.tw/terms-of-service>. Attention is drawn to the limitation of liability, indemnification and jurisdiction issues defined therein. Any holder of this document is advised that information contained hereon reflects the Company's findings at the time of its intervention only and within the limits of client's instruction, if any. The Company's sole responsibility is to its Client and this document does not exonerate parties to a transaction from exercising all their rights and obligations under the transaction documents. This document cannot be reproduced, except in full, without prior written approval of the Company. Any unauthorized alteration, forgery or falsification of the content or appearance of this document is unlawful and offenders may be prosecuted to the fullest extent of the law. Unless otherwise stated the results shown in this test report refer only to the sample(s) tested.

MITSUBISHI GAS CHEMICAL CO., INC. ELECTRONICS MATERIAL DIVISION
 5-2, MARUNOUCHI 2-CHOME, CHIYODA-KU, TOKYO 100-8324, JAPAN

Test Item(s)	Method	Unit	MDL	Result	Limit
				No.1	
Diundecyl phthalate (DUP) (CAS No.: 3648-20-2)	With reference to IEC 62321-8: 2017, analysis was performed by GC/MS.	mg/kg	50	n.d.	-
Dipropylheptyl phthalate (CAS No.: 53306-54-0)	With reference to IEC 62321-8: 2017, analysis was performed by GC/MS.	mg/kg	50	n.d.	-
bis(2-n-Butoxyethyl) phthalate (DBEP) (CAS No.: 117-83-9)	With reference to IEC 62321-8: 2017, analysis was performed by GC/MS.	mg/kg	50	n.d.	-
Bis(2-ethoxyethyl) phthalate (DEEP) (CAS No.: 605-54-9)	With reference to IEC 62321-8: 2017, analysis was performed by GC/MS.	mg/kg	50	n.d.	-
Bis(2-methoxyethyl) phthalate (DMEP) (CAS No.: 117-82-8)	With reference to IEC 62321-8: 2017, analysis was performed by GC/MS.	mg/kg	50	n.d.	-
bis(4-Methyl-2-pentyl) phthalate (BMPP) (CAS No.: 146-50-9)	With reference to IEC 62321-8: 2017, analysis was performed by GC/MS.	mg/kg	50	n.d.	-
Dibenzyl phthalate (CAS No.: 523-31-9)	With reference to IEC 62321-8: 2017, analysis was performed by GC/MS.	mg/kg	50	n.d.	-
Diphenyl phthalate (DPhP) (CAS No.: 84-62-8)	With reference to IEC 62321-8: 2017, analysis was performed by GC/MS.	mg/kg	50	n.d.	-
Diisopentyl phthalate (DIPP) (CAS No.: 605-50-5)	With reference to IEC 62321-8: 2017, analysis was performed by GC/MS.	mg/kg	50	n.d.	-
N-pentyl iso-pentyl phthalate (NPIPP) (CAS No.: 776297-69-9)	With reference to IEC 62321-8: 2017, analysis was performed by GC/MS.	mg/kg	50	n.d.	-
Diisononyl adipate (CAS No.: 33703-08-1)	With reference to IEC 62321-8: 2017, analysis was performed by GC/MS.	mg/kg	50	n.d.	-
1,2-Benzenedicarboxylic acid, di-C7-11-branched and linear alkyl esters (DHNUP) (CAS No.: 68515-42-4)	With reference to IEC 62321-8: 2017, analysis was performed by GC/MS.	mg/kg	50	n.d.	-
1,2-Benzenedicarboxylic acid, di-C6-8-branched alkyl esters, C7-rich (DIHP) (CAS No.: 71888-89-6)	With reference to IEC 62321-8: 2017, analysis was performed by GC/MS.	mg/kg	50	n.d.	-
1,2-Benzenedicarboxylic acid, dihexyl ester, branched and linear (DHP) (CAS No.: 68515-50-4)	With reference to IEC 62321-8: 2017, analysis was performed by GC/MS.	mg/kg	50	n.d.	-
1,2-Benzenedicarboxylic acid, dipentylester, branched and linear (CAS No.: 84777-06-0)	With reference to IEC 62321-8: 2017, analysis was performed by GC/MS.	mg/kg	50	n.d.	-
Formaldehyde (CAS No.: 50-00-0)	With reference to ISO 17226-1: 2018, analysis was performed by LC/DAD.	mg/kg	3	n.d.	-

This document is issued by the Company subject to its General Conditions of Service printed overleaf, available on request or accessible at <https://www.sgs.com.tw/terms-of-service> and, for electronic format documents, subject to Terms and Conditions for Electronic Documents at <https://www.sgs.com.tw/terms-of-service>. Attention is drawn to the limitation of liability, indemnification and jurisdiction issues defined therein. Any holder of this document is advised that information contained hereon reflects the Company's findings at the time of its intervention only and within the limits of client's instruction, if any. The Company's sole responsibility is to its Client and this document does not exonerate parties to a transaction from exercising all their rights and obligations under the transaction documents. This document cannot be reproduced, except in full, without prior written approval of the Company. Any unauthorized alteration, forgery or falsification of the content or appearance of this document is unlawful and offenders may be prosecuted to the fullest extent of the law. Unless otherwise stated the results shown in this test report refer only to the sample(s) tested.

Test Report

No.: ETR21301076

Date: 09-Mar-2021

Page: 8 of 37

MITSUBISHI GAS CHEMICAL CO., INC. ELECTRONICS MATERIAL DIVISION
5-2, MARUNOUCHI 2-CHOME, CHIYODA-KU, TOKYO 100-8324, JAPAN

Test Item(s)	Method	Unit	MDL	Result	Limit
				No.1	
Mirex (CAS No.: 2385-85-5)	With reference to US EPA 3550C: 2007, analysis was performed by GC/MS.	mg/kg	5	n.d.	-
PFOS and its salts (CAS No.: 1763-23-1 and its salts)	With reference to CEN/TS 15968: 2010, analysis was performed by LC/MS/MS.	mg/kg	0.01	n.d.	-
PFOA and its salts (CAS No.: 335-67-1 and its salts)	With reference to CEN/TS 15968: 2010, analysis was performed by LC/MS/MS.	mg/kg	0.01	n.d.	-
Antimony (Sb) (CAS No.: 7440-36-0)	With reference to US EPA 3052: 1996, analysis was performed by ICP-OES.	mg/kg	2	n.d.	-
Beryllium (Be) (CAS No.: 7440-41-7)	With reference to US EPA 3052: 1996, analysis was performed by ICP-OES.	mg/kg	2	n.d.	-
Chlorofluorocarbons (CFCs)					
CFC-13 (CAS No.: 75-72-9)	With reference to US EPA 5021A: 2014, analysis was performed by GC/MS.	mg/kg	1	n.d.	-
CFC-111 (CAS No.: 354-56-3)	With reference to US EPA 5021A: 2014, analysis was performed by GC/MS.	mg/kg	1	n.d.	-
CFC-112 (CAS No.: 76-12-0)	With reference to US EPA 5021A: 2014, analysis was performed by GC/MS.	mg/kg	1	n.d.	-
CFC-211 (CAS No.: 422-78-6)	With reference to US EPA 5021A: 2014, analysis was performed by GC/MS.	mg/kg	1	n.d.	-
CFC-212 (CAS No.: 3182-26-1)	With reference to US EPA 5021A: 2014, analysis was performed by GC/MS.	mg/kg	1	n.d.	-
CFC-213 (CAS No.: 2354-06-5)	With reference to US EPA 5021A: 2014, analysis was performed by GC/MS.	mg/kg	1	n.d.	-
CFC-214 (CAS No.: 29255-31-0)	With reference to US EPA 5021A: 2014, analysis was performed by GC/MS.	mg/kg	1	n.d.	-

This document is issued by the Company subject to its General Conditions of Service printed overleaf, available on request or accessible at <https://www.sgs.com.tw/terms-of-service> and, for electronic format documents, subject to Terms and Conditions for Electronic Documents at <https://www.sgs.com.tw/terms-of-service>. Attention is drawn to the limitation of liability, indemnification and jurisdiction issues defined therein. Any holder of this document is advised that information contained hereon reflects the Company's findings at the time of its intervention only and within the limits of client's instruction, if any. The Company's sole responsibility is to its Client and this document does not exonerate parties to a transaction from exercising all their rights and obligations under the transaction documents. This document cannot be reproduced, except in full, without prior written approval of the Company. Any unauthorized alteration, forgery or falsification of the content or appearance of this document is unlawful and offenders may be prosecuted to the fullest extent of the law. Unless otherwise stated the results shown in this test report refer only to the sample(s) tested.

Test Report

No.: ETR21301076

Date: 09-Mar-2021

Page: 9 of 37

MITSUBISHI GAS CHEMICAL CO., INC. ELECTRONICS MATERIAL DIVISION
5-2, MARUNOUCHI 2-CHOME, CHIYODA-KU, TOKYO 100-8324, JAPAN

Test Item(s)	Method	Unit	MDL	Result	Limit
				No.1	
CFC-215 (CAS No.: 4259-43-2)	With reference to US EPA 5021A: 2014, analysis was performed by GC/MS.	mg/kg	1	n.d.	-
CFC-216 (CAS No.: 661-97-2)	With reference to US EPA 5021A: 2014, analysis was performed by GC/MS.	mg/kg	1	n.d.	-
CFC-217 (CAS No.: 422-86-6)	With reference to US EPA 5021A: 2014, analysis was performed by GC/MS.	mg/kg	1	n.d.	-
CFC-12 (CAS No.: 75-71-8)	With reference to US EPA 5021A: 2014, analysis was performed by GC/MS.	mg/kg	1	n.d.	-
CFC-11 (CAS No.: 75-69-4)	With reference to US EPA 5021A: 2014, analysis was performed by GC/MS.	mg/kg	1	n.d.	-
CFC-115 (CAS No.: 76-15-3)	With reference to US EPA 5021A: 2014, analysis was performed by GC/MS.	mg/kg	1	n.d.	-
CFC-114 (CAS No.: 76-14-2)	With reference to US EPA 5021A: 2014, analysis was performed by GC/MS.	mg/kg	1	n.d.	-
CFC-113 (CAS No.: 76-13-1)	With reference to US EPA 5021A: 2014, analysis was performed by GC/MS.	mg/kg	1	n.d.	-
Hydrochlorofluorocarbons (HCFCs)					
HCFC-21 (CAS No.: 75-43-4)	With reference to US EPA 5021A: 2014, analysis was performed by GC/MS.	mg/kg	1	n.d.	-
HCFC-22 (CAS No.: 75-45-6)	With reference to US EPA 5021A: 2014, analysis was performed by GC/MS.	mg/kg	1	n.d.	-
HCFC-31 (CAS No.: 593-70-4)	With reference to US EPA 5021A: 2014, analysis was performed by GC/MS.	mg/kg	1	n.d.	-

This document is issued by the Company subject to its General Conditions of Service printed overleaf, available on request or accessible at <https://www.sgs.com.tw/terms-of-service> and, for electronic format documents, subject to Terms and Conditions for Electronic Documents at <https://www.sgs.com.tw/terms-of-service>. Attention is drawn to the limitation of liability, indemnification and jurisdiction issues defined therein. Any holder of this document is advised that information contained hereon reflects the Company's findings at the time of its intervention only and within the limits of client's instruction, if any. The Company's sole responsibility is to its Client and this document does not exonerate parties to a transaction from exercising all their rights and obligations under the transaction documents. This document cannot be reproduced, except in full, without prior written approval of the Company. Any unauthorized alteration, forgery or falsification of the content or appearance of this document is unlawful and offenders may be prosecuted to the fullest extent of the law. Unless otherwise stated the results shown in this test report refer only to the sample(s) tested.

Test Report

No.: ETR21301076

Date: 09-Mar-2021

Page: 10 of 37

MITSUBISHI GAS CHEMICAL CO., INC. ELECTRONICS MATERIAL DIVISION
5-2, MARUNOUCHI 2-CHOME, CHIYODA-KU, TOKYO 100-8324, JAPAN

Test Item(s)	Method	Unit	MDL	Result	Limit
				No.1	
HCFC-121 (CAS No.: 354-14-3)	With reference to US EPA 5021A: 2014, analysis was performed by GC/MS.	mg/kg	1	n.d.	-
HCFC-122 (CAS No.: 354-21-2)	With reference to US EPA 5021A: 2014, analysis was performed by GC/MS.	mg/kg	1	n.d.	-
HCFC-123 (CAS No.: 306-83-2)	With reference to US EPA 5021A: 2014, analysis was performed by GC/MS.	mg/kg	1	n.d.	-
HCFC-124 (CAS No.: 2837-89-0)	With reference to US EPA 5021A: 2014, analysis was performed by GC/MS.	mg/kg	1	n.d.	-
HCFC-131 (CAS No.: 359-28-4)	With reference to US EPA 5021A: 2014, analysis was performed by GC/MS.	mg/kg	1	n.d.	-
HCFC-132b (CAS No.: 1649-08-7)	With reference to US EPA 5021A: 2014, analysis was performed by GC/MS.	mg/kg	1	n.d.	-
HCFC-133a (CAS No.: 75-88-7)	With reference to US EPA 5021A: 2014, analysis was performed by GC/MS.	mg/kg	1	n.d.	-
HCFC-142b (CAS No.: 75-68-3)	With reference to US EPA 5021A: 2014, analysis was performed by GC/MS.	mg/kg	1	n.d.	-
HCFC-221 (CAS No.: 422-26-4)	With reference to US EPA 5021A: 2014, analysis was performed by GC/MS.	mg/kg	1	n.d.	-
HCFC-222 (CAS No.: 422-49-1)	With reference to US EPA 5021A: 2014, analysis was performed by GC/MS.	mg/kg	1	n.d.	-
HCFC-223 (CAS No.: 422-52-6)	With reference to US EPA 5021A: 2014, analysis was performed by GC/MS.	mg/kg	1	n.d.	-
HCFC-224 (CAS No.: 422-54-8)	With reference to US EPA 5021A: 2014, analysis was performed by GC/MS.	mg/kg	1	n.d.	-

This document is issued by the Company subject to its General Conditions of Service printed overleaf, available on request or accessible at <https://www.sgs.com.tw/terms-of-service> and, for electronic format documents, subject to Terms and Conditions for Electronic Documents at <https://www.sgs.com.tw/terms-of-service>. Attention is drawn to the limitation of liability, indemnification and jurisdiction issues defined therein. Any holder of this document is advised that information contained hereon reflects the Company's findings at the time of its intervention only and within the limits of client's instruction, if any. The Company's sole responsibility is to its Client and this document does not exonerate parties to a transaction from exercising all their rights and obligations under the transaction documents. This document cannot be reproduced, except in full, without prior written approval of the Company. Any unauthorized alteration, forgery or falsification of the content or appearance of this document is unlawful and offenders may be prosecuted to the fullest extent of the law. Unless otherwise stated the results shown in this test report refer only to the sample(s) tested.

Test Report

No.: ETR21301076

Date: 09-Mar-2021

Page: 11 of 37

MITSUBISHI GAS CHEMICAL CO., INC. ELECTRONICS MATERIAL DIVISION
5-2, MARUNOUCHI 2-CHOME, CHIYODA-KU, TOKYO 100-8324, JAPAN

Test Item(s)	Method	Unit	MDL	Result	Limit
				No.1	
HCFC-225ca (CAS No.: 422-56-0)	With reference to US EPA 5021A: 2014, analysis was performed by GC/MS.	mg/kg	1	n.d.	-
HCFC-225cb (CAS No.: 507-55-1)	With reference to US EPA 5021A: 2014, analysis was performed by GC/MS.	mg/kg	1	n.d.	-
HCFC-226 (CAS No.: 431-87-8)	With reference to US EPA 5021A: 2014, analysis was performed by GC/MS.	mg/kg	1	n.d.	-
HCFC-231 (CAS No.: 421-94-3)	With reference to US EPA 5021A: 2014, analysis was performed by GC/MS.	mg/kg	1	n.d.	-
HCFC-232 (CAS No.: 460-89-9)	With reference to US EPA 5021A: 2014, analysis was performed by GC/MS.	mg/kg	1	n.d.	-
HCFC-233 (CAS No.: 7125-84-0)	With reference to US EPA 5021A: 2014, analysis was performed by GC/MS.	mg/kg	1	n.d.	-
HCFC-234 (CAS No.: 425-94-5)	With reference to US EPA 5021A: 2014, analysis was performed by GC/MS.	mg/kg	1	n.d.	-
HCFC-235 (CAS No.: 460-92-4)	With reference to US EPA 5021A: 2014, analysis was performed by GC/MS.	mg/kg	1	n.d.	-
HCFC-241 (CAS No.: 666-27-3)	With reference to US EPA 5021A: 2014, analysis was performed by GC/MS.	mg/kg	1	n.d.	-
HCFC-242 (CAS No.: 460-63-9)	With reference to US EPA 5021A: 2014, analysis was performed by GC/MS.	mg/kg	1	n.d.	-
HCFC-244	With reference to US EPA 5021A: 2014, analysis was performed by GC/MS.	mg/kg	1	n.d.	-
HCFC-251 (CAS No.: 421-41-0)	With reference to US EPA 5021A: 2014, analysis was performed by GC/MS.	mg/kg	1	n.d.	-

This document is issued by the Company subject to its General Conditions of Service printed overleaf, available on request or accessible at <https://www.sgs.com.tw/terms-of-service> and, for electronic format documents, subject to Terms and Conditions for Electronic Documents at <https://www.sgs.com.tw/terms-of-service>. Attention is drawn to the limitation of liability, indemnification and jurisdiction issues defined therein. Any holder of this document is advised that information contained hereon reflects the Company's findings at the time of its intervention only and within the limits of client's instruction, if any. The Company's sole responsibility is to its Client and this document does not exonerate parties to a transaction from exercising all their rights and obligations under the transaction documents. This document cannot be reproduced, except in full, without prior written approval of the Company. Any unauthorized alteration, forgery or falsification of the content or appearance of this document is unlawful and offenders may be prosecuted to the fullest extent of the law. Unless otherwise stated the results shown in this test report refer only to the sample(s) tested.

Test Report

No.: ETR21301076

Date: 09-Mar-2021

Page: 12 of 37

MITSUBISHI GAS CHEMICAL CO., INC. ELECTRONICS MATERIAL DIVISION
5-2, MARUNOUCHI 2-CHOME, CHIYODA-KU, TOKYO 100-8324, JAPAN

Test Item(s)	Method	Unit	MDL	Result	Limit
				No.1	
HCFC-252 (CAS No.: 819-00-1)	With reference to US EPA 5021A: 2014, analysis was performed by GC/MS.	mg/kg	1	n.d.	-
HCFC-261 (CAS No.: 420-97-3)	With reference to US EPA 5021A: 2014, analysis was performed by GC/MS.	mg/kg	1	n.d.	-
HCFC-262 (CAS No.: 421-02-03)	With reference to US EPA 5021A: 2014, analysis was performed by GC/MS.	mg/kg	1	n.d.	-
HCFC-271 (CAS No.: 430-55-7)	With reference to US EPA 5021A: 2014, analysis was performed by GC/MS.	mg/kg	1	n.d.	-
HCFC-141b (CAS No.: 1717-00-6)	With reference to US EPA 5021A: 2014, analysis was performed by GC/MS.	mg/kg	1	n.d.	-
HCFC-243 (CAS No.: 460-69-5)	With reference to US EPA 5021A: 2014, analysis was performed by GC/MS.	mg/kg	1	n.d.	-
HCFC-253 (CAS No.: 460-35-5)	With reference to US EPA 5021A: 2014, analysis was performed by GC/MS.	mg/kg	1	n.d.	-
Halons					
Halon-1211 (CAS No.: 353-59-3)	With reference to US EPA 5021A: 2014, analysis was performed by GC/MS.	mg/kg	1	n.d.	-
Halon-1301 (CAS No.: 75-63-8)	With reference to US EPA 5021A: 2014, analysis was performed by GC/MS.	mg/kg	1	n.d.	-
Halon-2402 (CAS No.: 124-73-2)	With reference to US EPA 5021A: 2014, analysis was performed by GC/MS.	mg/kg	1	n.d.	-
Bromomethane (CAS No.: 74-83-9)	With reference to US EPA 5021A: 2014, analysis was performed by GC/MS.	mg/kg	1	n.d.	-

This document is issued by the Company subject to its General Conditions of Service printed overleaf, available on request or accessible at <https://www.sgs.com.tw/terms-of-service> and, for electronic format documents, subject to Terms and Conditions for Electronic Documents at <https://www.sgs.com.tw/terms-of-service>. Attention is drawn to the limitation of liability, indemnification and jurisdiction issues defined therein. Any holder of this document is advised that information contained hereon reflects the Company's findings at the time of its intervention only and within the limits of client's instruction, if any. The Company's sole responsibility is to its Client and this document does not exonerate parties to a transaction from exercising all their rights and obligations under the transaction documents. This document cannot be reproduced, except in full, without prior written approval of the Company. Any unauthorized alteration, forgery or falsification of the content or appearance of this document is unlawful and offenders may be prosecuted to the fullest extent of the law. Unless otherwise stated the results shown in this test report refer only to the sample(s) tested.



Test Report

No.: ETR21301076

Date: 09-Mar-2021

Page: 13 of 37

MITSUBISHI GAS CHEMICAL CO., INC. ELECTRONICS MATERIAL DIVISION
5-2, MARUNOUCHI 2-CHOME, CHIYODA-KU, TOKYO 100-8324, JAPAN

Test Item(s)	Method	Unit	MDL	Result	Limit
				No.1	
Hydrobromofluorocarbons (HBFCs)					
HBFC-271B1 (C3H6FBr)	With reference to US EPA 5021A: 2014, analysis was performed by GC/MS.	mg/kg	1	n.d.	-
HBFC-262B1 (C3H5F2Br)	With reference to US EPA 5021A: 2014, analysis was performed by GC/MS.	mg/kg	1	n.d.	-
HBFC-261B2 (C3H5FBr2)	With reference to US EPA 5021A: 2014, analysis was performed by GC/MS.	mg/kg	1	n.d.	-
HBFC-253B1 (C3H4F3Br)	With reference to US EPA 5021A: 2014, analysis was performed by GC/MS.	mg/kg	1	n.d.	-
HBFC-252B2 (C3H4F2Br2)	With reference to US EPA 5021A: 2014, analysis was performed by GC/MS.	mg/kg	1	n.d.	-
HBFC-251B3 (C3H4FBr3)	With reference to US EPA 5021A: 2014, analysis was performed by GC/MS.	mg/kg	1	n.d.	-
HBFC-244B1 (C3H3F4Br)	With reference to US EPA 5021A: 2014, analysis was performed by GC/MS.	mg/kg	1	n.d.	-
HBFC-243B2 (C3H3F3Br2)	With reference to US EPA 5021A: 2014, analysis was performed by GC/MS.	mg/kg	1	n.d.	-
HBFC-242B3 (C3H3F2Br3)	With reference to US EPA 5021A: 2014, analysis was performed by GC/MS.	mg/kg	1	n.d.	-
HBFC-241B4 (C3H3FBr4)	With reference to US EPA 5021A: 2014, analysis was performed by GC/MS.	mg/kg	1	n.d.	-
HBFC-235B1 (C3H2F5Br)	With reference to US EPA 5021A: 2014, analysis was performed by GC/MS.	mg/kg	1	n.d.	-

This document is issued by the Company subject to its General Conditions of Service printed overleaf, available on request or accessible at <https://www.sgs.com.tw/terms-of-service> and, for electronic format documents, subject to Terms and Conditions for Electronic Documents at <https://www.sgs.com.tw/terms-of-service>. Attention is drawn to the limitation of liability, indemnification and jurisdiction issues defined therein. Any holder of this document is advised that information contained hereon reflects the Company's findings at the time of its intervention only and within the limits of client's instruction, if any. The Company's sole responsibility is to its Client and this document does not exonerate parties to a transaction from exercising all their rights and obligations under the transaction documents. This document cannot be reproduced, except in full, without prior written approval of the Company. Any unauthorized alteration, forgery or falsification of the content or appearance of this document is unlawful and offenders may be prosecuted to the fullest extent of the law. Unless otherwise stated the results shown in this test report refer only to the sample(s) tested.



Test Report

No.: ETR21301076

Date: 09-Mar-2021

Page: 14 of 37

MITSUBISHI GAS CHEMICAL CO., INC. ELECTRONICS MATERIAL DIVISION
5-2, MARUNOUCHI 2-CHOME, CHIYODA-KU, TOKYO 100-8324, JAPAN

Test Item(s)	Method	Unit	MDL	Result	Limit
				No.1	
HBFC-234B2 (C3H2F4Br2)	With reference to US EPA 5021A: 2014, analysis was performed by GC/MS.	mg/kg	1	n.d.	-
HBFC-233B3 (C3H2F3Br3)	With reference to US EPA 5021A: 2014, analysis was performed by GC/MS.	mg/kg	1	n.d.	-
HBFC-232B4 (C3H2F2Br4)	With reference to US EPA 5021A: 2014, analysis was performed by GC/MS.	mg/kg	1	n.d.	-
HBFC-231B5 (C3H2FBr5)	With reference to US EPA 5021A: 2014, analysis was performed by GC/MS.	mg/kg	1	n.d.	-
HBFC-226B1 (C3HF6Br)	With reference to US EPA 5021A: 2014, analysis was performed by GC/MS.	mg/kg	1	n.d.	-
HBFC-225B2 (C3HF5Br2)	With reference to US EPA 5021A: 2014, analysis was performed by GC/MS.	mg/kg	1	n.d.	-
HBFC-224B3 (C3HF4Br3)	With reference to US EPA 5021A: 2014, analysis was performed by GC/MS.	mg/kg	1	n.d.	-
HBFC-223B4 (C3HF3Br4)	With reference to US EPA 5021A: 2014, analysis was performed by GC/MS.	mg/kg	1	n.d.	-
HBFC-222B5 (C3HF2Br5)	With reference to US EPA 5021A: 2014, analysis was performed by GC/MS.	mg/kg	1	n.d.	-
HBFC-221B6 (C3HFBr6)	With reference to US EPA 5021A: 2014, analysis was performed by GC/MS.	mg/kg	1	n.d.	-
HBFC-151B1 (C2H4FBr)	With reference to US EPA 5021A: 2014, analysis was performed by GC/MS.	mg/kg	1	n.d.	-
HBFC-142B1 (C2H3F2Br)	With reference to US EPA 5021A: 2014, analysis was performed by GC/MS.	mg/kg	1	n.d.	-

This document is issued by the Company subject to its General Conditions of Service printed overleaf, available on request or accessible at <https://www.sgs.com.tw/terms-of-service> and, for electronic format documents, subject to Terms and Conditions for Electronic Documents at <https://www.sgs.com.tw/terms-of-service>. Attention is drawn to the limitation of liability, indemnification and jurisdiction issues defined therein. Any holder of this document is advised that information contained hereon reflects the Company's findings at the time of its intervention only and within the limits of client's instruction, if any. The Company's sole responsibility is to its Client and this document does not exonerate parties to a transaction from exercising all their rights and obligations under the transaction documents. This document cannot be reproduced, except in full, without prior written approval of the Company. Any unauthorized alteration, forgery or falsification of the content or appearance of this document is unlawful and offenders may be prosecuted to the fullest extent of the law. Unless otherwise stated the results shown in this test report refer only to the sample(s) tested.



Test Report

No.: ETR21301076

Date: 09-Mar-2021

Page: 15 of 37

MITSUBISHI GAS CHEMICAL CO., INC. ELECTRONICS MATERIAL DIVISION
5-2, MARUNOUCHI 2-CHOME, CHIYODA-KU, TOKYO 100-8324, JAPAN

Test Item(s)	Method	Unit	MDL	Result	Limit
				No.1	
HBFC-141B2 (C2H3FBr2)	With reference to US EPA 5021A: 2014, analysis was performed by GC/MS.	mg/kg	1	n.d.	-
HBFC-133B1 (C2H2F3Br)	With reference to US EPA 5021A: 2014, analysis was performed by GC/MS.	mg/kg	1	n.d.	-
HBFC-132B2 (C2H2F2Br2)	With reference to US EPA 5021A: 2014, analysis was performed by GC/MS.	mg/kg	1	n.d.	-
HBFC-131B3 (C2H2FBr3)	With reference to US EPA 5021A: 2014, analysis was performed by GC/MS.	mg/kg	1	n.d.	-
HBFC-124B1 (C2HF4Br)	With reference to US EPA 5021A: 2014, analysis was performed by GC/MS.	mg/kg	1	n.d.	-
HBFC-123B2 (C2HF3Br2)	With reference to US EPA 5021A: 2014, analysis was performed by GC/MS.	mg/kg	1	n.d.	-
HBFC-122B3 (C2HF2Br3)	With reference to US EPA 5021A: 2014, analysis was performed by GC/MS.	mg/kg	1	n.d.	-
HBFC-121B4 (C2HFBr4)	With reference to US EPA 5021A: 2014, analysis was performed by GC/MS.	mg/kg	1	n.d.	-
HBFC-31B1 (CH2FBr) (CAS No.: 373-52-4)	With reference to US EPA 5021A: 2014, analysis was performed by GC/MS.	mg/kg	1	n.d.	-
HBFC-22B1 (CHF2Br) (CAS No.: 1511-62-2)	With reference to US EPA 5021A: 2014, analysis was performed by GC/MS.	mg/kg	1	n.d.	-
HBFC-21B2 (CHFBr2) (CAS No.: 1868-53-7)	With reference to US EPA 5021A: 2014, analysis was performed by GC/MS.	mg/kg	1	n.d.	-

This document is issued by the Company subject to its General Conditions of Service printed overleaf, available on request or accessible at <https://www.sgs.com.tw/terms-of-service> and, for electronic format documents, subject to Terms and Conditions for Electronic Documents at <https://www.sgs.com.tw/terms-of-service>. Attention is drawn to the limitation of liability, indemnification and jurisdiction issues defined therein. Any holder of this document is advised that information contained hereon reflects the Company's findings at the time of its intervention only and within the limits of client's instruction, if any. The Company's sole responsibility is to its Client and this document does not exonerate parties to a transaction from exercising all their rights and obligations under the transaction documents. This document cannot be reproduced, except in full, without prior written approval of the Company. Any unauthorized alteration, forgery or falsification of the content or appearance of this document is unlawful and offenders may be prosecuted to the fullest extent of the law. Unless otherwise stated the results shown in this test report refer only to the sample(s) tested.

Test Report

No.: ETR21301076

Date: 09-Mar-2021

Page: 16 of 37

MITSUBISHI GAS CHEMICAL CO., INC. ELECTRONICS MATERIAL DIVISION
5-2, MARUNOUCHI 2-CHOME, CHIYODA-KU, TOKYO 100-8324, JAPAN

Test Item(s)	Method	Unit	MDL	Result	Limit
				No.1	
Hydrofluorocarbon (HFCs)					
HFC-23 (CHF3) (CAS No.: 75-46-7)	With reference to US EPA 5021A: 2014, analysis was performed by GC/MS.	mg/kg	1	n.d.	-
HFC-32 (CH2F2) (CAS No.: 75-10-5)	With reference to US EPA 5021A: 2014, analysis was performed by GC/MS.	mg/kg	1	n.d.	-
HFC-41 (CH3F) (CAS No.: 593-53-3)	With reference to US EPA 5021A: 2014, analysis was performed by GC/MS.	mg/kg	1	n.d.	-
HFC-43-10mee (C5H2F10)	With reference to US EPA 5021A: 2014, analysis was performed by GC/MS.	mg/kg	1	n.d.	-
HFC-125 (C2HF5)	With reference to US EPA 5021A: 2014, analysis was performed by GC/MS.	mg/kg	1	n.d.	-
HFC-134 (C2H2F4)	With reference to US EPA 5021A: 2014, analysis was performed by GC/MS.	mg/kg	1	n.d.	-
HFC-134a (CH2FCF3) (CAS No.: 811-97-2)	With reference to US EPA 5021A: 2014, analysis was performed by GC/MS.	mg/kg	1	n.d.	-
HFC-143 (CH3F3)	With reference to US EPA 5021A: 2014, analysis was performed by GC/MS.	mg/kg	1	n.d.	-
HFC-143a (CH3F3)	With reference to US EPA 5021A: 2014, analysis was performed by GC/MS.	mg/kg	1	n.d.	-
HFC-152a (C2H4F2) (CAS No.: 75-37-6)	With reference to US EPA 5021A: 2014, analysis was performed by GC/MS.	mg/kg	1	n.d.	-
HFC-227ea (C3HF7) (CAS No.: 431-89-0)	With reference to US EPA 5021A: 2014, analysis was performed by GC/MS.	mg/kg	1	n.d.	-

This document is issued by the Company subject to its General Conditions of Service printed overleaf, available on request or accessible at <https://www.sgs.com.tw/terms-of-service> and, for electronic format documents, subject to Terms and Conditions for Electronic Documents at <https://www.sgs.com.tw/terms-of-service>. Attention is drawn to the limitation of liability, indemnification and jurisdiction issues defined therein. Any holder of this document is advised that information contained hereon reflects the Company's findings at the time of its intervention only and within the limits of client's instruction, if any. The Company's sole responsibility is to its Client and this document does not exonerate parties to a transaction from exercising all their rights and obligations under the transaction documents. This document cannot be reproduced, except in full, without prior written approval of the Company. Any unauthorized alteration, forgery or falsification of the content or appearance of this document is unlawful and offenders may be prosecuted to the fullest extent of the law. Unless otherwise stated the results shown in this test report refer only to the sample(s) tested.

Test Report

No.: ETR21301076

Date: 09-Mar-2021

Page: 17 of 37

MITSUBISHI GAS CHEMICAL CO., INC. ELECTRONICS MATERIAL DIVISION
5-2, MARUNOUCHI 2-CHOME, CHIYODA-KU, TOKYO 100-8324, JAPAN

Test Item(s)	Method	Unit	MDL	Result	Limit
				No.1	
HFC-236fa (CAS No.: 431-63-0)	With reference to US EPA 5021A: 2014, analysis was performed by GC/MS.	mg/kg	1	n.d.	-
HFC-245ca (C3H3F5)	With reference to US EPA 5021A: 2014, analysis was performed by GC/MS.	mg/kg	1	n.d.	-
HFC-245fa (C3H3F5)	With reference to US EPA 5021A: 2014, analysis was performed by GC/MS.	mg/kg	1	n.d.	-
HFC-365mfc (C4H5F5)	With reference to US EPA 5021A: 2014, analysis was performed by GC/MS.	mg/kg	1	n.d.	-
HFC-236ea (C3H2F6) (CAS No.: 431-63-0)	With reference to US EPA 5021A: 2014, analysis was performed by GC/MS.	mg/kg	1	n.d.	-
Perfluorocarbon (PFCs)					
Perfluorohexane (CAS No.: 355-42-0)	With reference to US EPA 5021A: 2014, analysis was performed by GC/MS.	mg/kg	1	n.d.	-
2-Perfluoromethylpentane (CAS No.: 355-04-4)	With reference to US EPA 5021A: 2014, analysis was performed by GC/MS.	mg/kg	1	n.d.	-
Perfluoro-n-pentane (CAS No.: 678-26-2)	With reference to US EPA 5021A: 2014, analysis was performed by GC/MS.	mg/kg	1	n.d.	-
Nonafluor-2- (trifluoromethyl)butane (CAS No.: 594-91-2)	With reference to US EPA 5021A: 2014, analysis was performed by GC/MS.	mg/kg	1	n.d.	-
1,4-dihydrooctafluorobutane (CAS No.: 377-36-6)	With reference to US EPA 5021A: 2014, analysis was performed by GC/MS.	mg/kg	1	n.d.	-
Perfluorisobutene (CAS No.: 382-21-8)	With reference to US EPA 5021A: 2014, analysis was performed by GC/MS.	mg/kg	1	n.d.	-

This document is issued by the Company subject to its General Conditions of Service printed overleaf, available on request or accessible at <https://www.sgs.com.tw/terms-of-service> and, for electronic format documents, subject to Terms and Conditions for Electronic Documents at <https://www.sgs.com.tw/terms-of-service>. Attention is drawn to the limitation of liability, indemnification and jurisdiction issues defined therein. Any holder of this document is advised that information contained hereon reflects the Company's findings at the time of its intervention only and within the limits of client's instruction, if any. The Company's sole responsibility is to its Client and this document does not exonerate parties to a transaction from exercising all their rights and obligations under the transaction documents. This document cannot be reproduced, except in full, without prior written approval of the Company. Any unauthorized alteration, forgery or falsification of the content or appearance of this document is unlawful and offenders may be prosecuted to the fullest extent of the law. Unless otherwise stated the results shown in this test report refer only to the sample(s) tested.

Test Report

No.: ETR21301076

Date: 09-Mar-2021

Page: 18 of 37

MITSUBISHI GAS CHEMICAL CO., INC. ELECTRONICS MATERIAL DIVISION
5-2, MARUNOUCHI 2-CHOME, CHIYODA-KU, TOKYO 100-8324, JAPAN

Test Item(s)	Method	Unit	MDL	Result	Limit
				No.1	
Freon C318 (CAS No.: 115-25-3)	With reference to US EPA 5021A: 2014, analysis was performed by GC/MS.	mg/kg	1	n.d.	-
Decafluorobutane (CAS No.: 355-25-9)	With reference to US EPA 5021A: 2014, analysis was performed by GC/MS.	mg/kg	1	n.d.	-
Freon 218 (CAS No.: 76-19-7)	With reference to US EPA 5021A: 2014, analysis was performed by GC/MS.	mg/kg	1	n.d.	-
Fluorocarbon 116 (CAS No.: 76-16-4)	With reference to US EPA 5021A: 2014, analysis was performed by GC/MS.	mg/kg	1	n.d.	-
F14 (CAS No.: 75-73-0)	With reference to US EPA 5021A: 2014, analysis was performed by GC/MS.	mg/kg	1	n.d.	-
Perfluor-1-butene (CAS No.: 357-26-6)	With reference to US EPA 5021A: 2014, analysis was performed by GC/MS.	mg/kg	1	n.d.	-
Chlorinate hydrocarbon (CHCs)					
trans-1,3-Dichloropropene (CAS No.: 10061-02-6)	With reference to US EPA 5021A: 2014, analysis was performed by GC/MS.	mg/kg	1	n.d.	-
trans-1,2-Dichloroethene (CAS No.: 156-60-5)	With reference to US EPA 5021A: 2014, analysis was performed by GC/MS.	mg/kg	1	n.d.	-
Dichloromethane, Methylene chloride (CAS No.: 75-09-2)	With reference to US EPA 5021A: 2014, analysis was performed by GC/MS.	mg/kg	1	n.d.	-
Hexachlorobutadiene (CAS No.: 87-68-3)	With reference to US EPA 5021A: 2014, analysis was performed by GC/MS.	mg/kg	1	n.d.	-
cis-1,3-Dichloropropene (CAS No.: 10061-01-5)	With reference to US EPA 5021A: 2014, analysis was performed by GC/MS.	mg/kg	1	n.d.	-

This document is issued by the Company subject to its General Conditions of Service printed overleaf, available on request or accessible at <https://www.sgs.com.tw/terms-of-service> and, for electronic format documents, subject to Terms and Conditions for Electronic Documents at <https://www.sgs.com.tw/terms-of-service>. Attention is drawn to the limitation of liability, indemnification and jurisdiction issues defined therein. Any holder of this document is advised that information contained hereon reflects the Company's findings at the time of its intervention only and within the limits of client's instruction, if any. The Company's sole responsibility is to its Client and this document does not exonerate parties to a transaction from exercising all their rights and obligations under the transaction documents. This document cannot be reproduced, except in full, without prior written approval of the Company. Any unauthorized alteration, forgery or falsification of the content or appearance of this document is unlawful and offenders may be prosecuted to the fullest extent of the law. Unless otherwise stated the results shown in this test report refer only to the sample(s) tested.

Test Report

No.: ETR21301076

Date: 09-Mar-2021

Page: 19 of 37

MITSUBISHI GAS CHEMICAL CO., INC. ELECTRONICS MATERIAL DIVISION
5-2, MARUNOUCHI 2-CHOME, CHIYODA-KU, TOKYO 100-8324, JAPAN

Test Item(s)	Method	Unit	MDL	Result	Limit
				No.1	
cis-1,2-Dichloroethene (CAS No.: 156-59-2)	With reference to US EPA 5021A: 2014, analysis was performed by GC/MS.	mg/kg	1	n.d.	-
Chloromethane (CAS No.: 74-87-3)	With reference to US EPA 5021A: 2014, analysis was performed by GC/MS.	mg/kg	1	n.d.	-
Carbon tetrachloride (CAS No.: 56-23-5)	With reference to US EPA 5021A: 2014, analysis was performed by GC/MS.	mg/kg	1	n.d.	-
2,2-Dichloropropane (CAS No.: 594-20-7)	With reference to US EPA 5021A: 2014, analysis was performed by GC/MS.	mg/kg	1	n.d.	-
1,2-Dichloroethane (CAS No.: 107-06-2)	With reference to US EPA 5021A: 2014, analysis was performed by GC/MS.	mg/kg	1	n.d.	-
1,1-Dichloropropene (CAS No.: 563-58-6)	With reference to US EPA 5021A: 2014, analysis was performed by GC/MS.	mg/kg	1	n.d.	-
1,2,3-Trichloropropane (CAS No.: 96-18-4)	With reference to US EPA 5021A: 2014, analysis was performed by GC/MS.	mg/kg	1	n.d.	-
Chloroform (CAS No.: 67-66-3)	With reference to US EPA 5021A: 2014, analysis was performed by GC/MS.	mg/kg	1	n.d.	-
1,2-Dichloropropane (CAS No.: 78-87-5)	With reference to US EPA 5021A: 2014, analysis was performed by GC/MS.	mg/kg	1	n.d.	-
1,1,1,2-Tetrachloroethane (CAS No.: 630-20-6)	With reference to US EPA 5021A: 2014, analysis was performed by GC/MS.	mg/kg	1	n.d.	-
1,1,1-Trichloroethane (CAS No.: 71-55-6)	With reference to US EPA 5021A: 2014, analysis was performed by GC/MS.	mg/kg	1	n.d.	-
1,1,2-Trichloroethane (CAS No.: 79-00-5)	With reference to US EPA 5021A: 2014, analysis was performed by GC/MS.	mg/kg	1	n.d.	-

This document is issued by the Company subject to its General Conditions of Service printed overleaf, available on request or accessible at <https://www.sgs.com.tw/terms-of-service> and, for electronic format documents, subject to Terms and Conditions for Electronic Documents at <https://www.sgs.com.tw/terms-of-service>. Attention is drawn to the limitation of liability, indemnification and jurisdiction issues defined therein. Any holder of this document is advised that information contained hereon reflects the Company's findings at the time of its intervention only and within the limits of client's instruction, if any. The Company's sole responsibility is to its Client and this document does not exonerate parties to a transaction from exercising all their rights and obligations under the transaction documents. This document cannot be reproduced, except in full, without prior written approval of the Company. Any unauthorized alteration, forgery or falsification of the content or appearance of this document is unlawful and offenders may be prosecuted to the fullest extent of the law. Unless otherwise stated the results shown in this test report refer only to the sample(s) tested.

Test Report

No.: ETR21301076

Date: 09-Mar-2021

Page: 20 of 37

MITSUBISHI GAS CHEMICAL CO., INC. ELECTRONICS MATERIAL DIVISION
5-2, MARUNOUCHI 2-CHOME, CHIYODA-KU, TOKYO 100-8324, JAPAN

Test Item(s)	Method	Unit	MDL	Result	Limit
				No.1	
1,1,2,2-Tetrachloroethane (CAS No.: 79-34-5)	With reference to US EPA 5021A: 2014, analysis was performed by GC/MS.	mg/kg	1	n.d.	-
1,1-Dichloroethylene (CAS No.: 75-35-4)	With reference to US EPA 5021A: 2014, analysis was performed by GC/MS.	mg/kg	1	n.d.	-
1,1-Dichloroethane (CAS No.: 75-34-3)	With reference to US EPA 5021A: 2014, analysis was performed by GC/MS.	mg/kg	1	n.d.	-
Chloroethane (CAS No.: 75-00-3)	With reference to US EPA 5021A: 2014, analysis was performed by GC/MS.	mg/kg	1	n.d.	-
Tetrachloroethene (CAS No.: 127-18-4)	With reference to US EPA 5021A: 2014, analysis was performed by GC/MS.	mg/kg	1	n.d.	-
Trichloroethylene (CAS No.: 79-01-6)	With reference to US EPA 5021A: 2014, analysis was performed by GC/MS.	mg/kg	1	n.d.	-
1,3-Dichloropropane (CAS No.: 142-28-9)	With reference to US EPA 5021A: 2014, analysis was performed by GC/MS.	mg/kg	1	n.d.	-
Bromochloromethan (CAS No.: 74-97-5)	With reference to US EPA 5021A: 2014, analysis was performed by GC/MS.	mg/kg	1	n.d.	-
Sulfur hexafluoride (CAS No.: 2551-62-4)	With reference to US EPA 5021A: 2014, analysis was performed by GC/MS.	mg/kg	1	n.d.	-
2-benzotriazol-2-yl-4,6-di-tert-butylphenol (UV-320) (CAS No.: 3846-71-7)	With reference to US EPA 3550C: 2007, analysis was performed by GC/MS.	mg/kg	5	n.d.	-
Hexabromocyclododecane (HBCDD) and all major diastereoisomers identified (α - HBCDD, β - HBCDD, γ - HBCDD) (CAS No.: 25637-99-4, 3194-55-6 (134237-51-7, 134237-50-6, 134237-52-8))	With reference to IEC 62321: 2008, analysis was performed by GC/MS.	mg/kg	5	n.d.	-

This document is issued by the Company subject to its General Conditions of Service printed overleaf, available on request or accessible at <https://www.sgs.com.tw/terms-of-service> and, for electronic format documents, subject to Terms and Conditions for Electronic Documents at <https://www.sgs.com.tw/terms-of-service>. Attention is drawn to the limitation of liability, indemnification and jurisdiction issues defined therein. Any holder of this document is advised that information contained hereon reflects the Company's findings at the time of its intervention only and within the limits of client's instruction, if any. The Company's sole responsibility is to its Client and this document does not exonerate parties to a transaction from exercising all their rights and obligations under the transaction documents. This document cannot be reproduced, except in full, without prior written approval of the Company. Any unauthorized alteration, forgery or falsification of the content or appearance of this document is unlawful and offenders may be prosecuted to the fullest extent of the law. Unless otherwise stated the results shown in this test report refer only to the sample(s) tested.

Test Report

No.: ETR21301076

Date: 09-Mar-2021

Page: 21 of 37

MITSUBISHI GAS CHEMICAL CO., INC. ELECTRONICS MATERIAL DIVISION
5-2, MARUNOUCHI 2-CHOME, CHIYODA-KU, TOKYO 100-8324, JAPAN

Test Item(s)	Method	Unit	MDL	Result	Limit
				No.1	
Radioactive substances	Geiger counter.	μSv/hour	-	Negative*	-
Medium Chain Chlorinated Paraffins(C14-C17) (MCCP) (CAS No.: 85535-85-9)	With reference to ISO 18219: 2015, analysis was performed by GC/MS.	mg/kg	50	n.d.	-
Selenium (Se) (CAS No.: 7782-49-2)	With reference to US EPA 3052: 1996, analysis was performed by ICP-OES.	mg/kg	2	n.d.	-
Bismuth (Bi) (CAS No.: 7440-69-9)	With reference to US EPA 3052: 1996, analysis was performed by ICP-OES.	mg/kg	2	n.d.	-
Monomethyl dibromodiphenyl methane (DBBT) (CAS No.: 99688-47-8)	With reference to US EPA 3550C: 2007, analysis was performed by GC/MS.	mg/kg	0.5	n.d.	-
Tris(2-chloroethyl) phosphate (TCEP) (CAS No.: 115-96-8)	With reference to US EPA 3550C: 2007, analysis was performed by GC/MS.	mg/kg	5	n.d.	-
Dibutyl tin (DBT)	With reference to ISO 17353: 2004, analysis was performed by GC/FPD.	mg/kg	0.03	n.d.	-
Diocetyl tin (DOT)	With reference to ISO 17353: 2004, analysis was performed by GC/FPD.	mg/kg	0.03	n.d.	-
Tin (Sn) (CAS No.: 7440-31-5)	With reference to US EPA 3052: 1996, analysis was performed by ICP-OES.	mg/kg	2	n.d.	-

Note :

1. mg/kg = ppm ; 0.1wt% = 1000ppm
2. MDL = Method Detection Limit
3. n.d. = Not Detected (Less than MDL)
4. "-" = Not Regulated
5. **= Qualitative analysis (No Unit)
6. Negative = Undetectable ; Positive = Detectable
7. Testing range of asbestos qualitative analysis is from less than 0.1% to 100%. The judgment criterion: asbestos fibers being found is shown as "Positive"; asbestos fibers not being found is shown as "Negative".
8. PFOS and its salts including :
CAS No.: 29081-56-9, 2795-39-3, 29457-72-5, 70225-14-8, 56773-42-3, 251099-16-8, 307-35-7.
9. PFOA and its salts including :
CAS No.: 3825-26-1, 335-95-5, 2395-00-8, 335-93-3, 335-66-0.

This document is issued by the Company subject to its General Conditions of Service printed overleaf, available on request or accessible at <https://www.sgs.com.tw/terms-of-service> and, for electronic format documents, subject to Terms and Conditions for Electronic Documents at <https://www.sgs.com.tw/terms-of-service>. Attention is drawn to the limitation of liability, indemnification and jurisdiction issues defined therein. Any holder of this document is advised that information contained hereon reflects the Company's findings at the time of its intervention only and within the limits of client's instruction, if any. The Company's sole responsibility is to its Client and this document does not exonerate parties to a transaction from exercising all their rights and obligations under the transaction documents. This document cannot be reproduced, except in full, without prior written approval of the Company. Any unauthorized alteration, forgery or falsification of the content or appearance of this document is unlawful and offenders may be prosecuted to the fullest extent of the law. Unless otherwise stated the results shown in this test report refer only to the sample(s) tested.

MITSUBISHI GAS CHEMICAL CO., INC. ELECTRONICS MATERIAL DIVISION
 5-2, MARUNOUCHI 2-CHOME, CHIYODA-KU, TOKYO 100-8324, JAPAN

10. ▲ : The MDL was evaluated for element / tested substance.

Conversion Formula : $AX = A \times F$

AX	A	F
Bis(tributyltin)oxide (TBTO)	Tributyl Tin (TBT)	1.024

Parameter Conversion Table : https://eecloud.sgs.com/Region_TW/DocDownload.aspx#otherDoc

11. Negative*/Positive*: The test result of Geiger counter is from comparison between test outcome and environment background. In general, there is little radiation dose existing in environment. (Radiation dose from environment background usually less than or equal to 0.2μSv/hr)

The test result less than environment background was shown as Negative*; the result greater than environment background was shown as Positive*.

12. (#2) =

a. The sample is positive for Cr(VI) if the Cr(VI) concentration is greater than 0.13 μg/cm². The sample coating is considered to contain Cr(VI).

b. The sample is negative for Cr(VI) if Cr(VI) is n.d. (concentration less than 0.10 μg/cm²). The coating is considered a non-Cr(VI) based coating

c. The result between 0.10 μg/cm² and 0.13 μg/cm² is considered to be inconclusive - unavoidable coating variations may influence the determination.

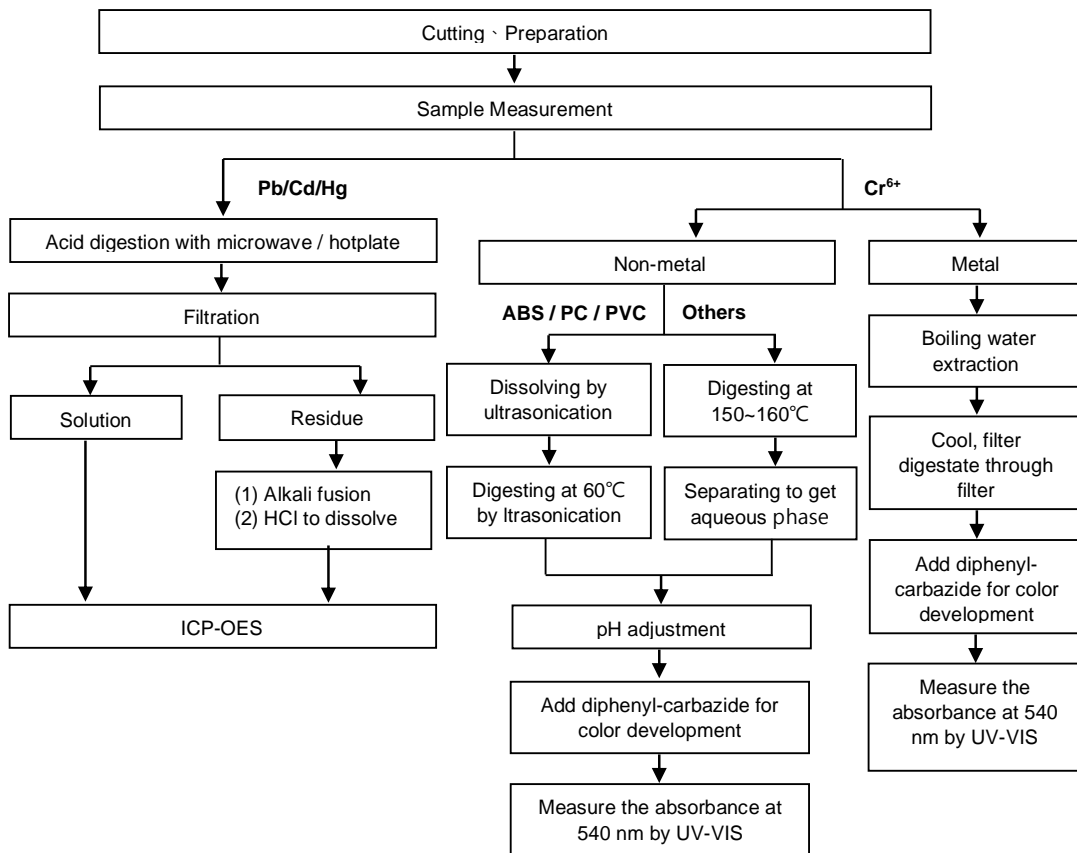
13. The statement of compliance conformity is based on comparison of testing results and limits.

This document is issued by the Company subject to its General Conditions of Service printed overleaf, available on request or accessible at <https://www.sgs.com.tw/terms-of-service> and, for electronic format documents, subject to Terms and Conditions for Electronic Documents at <https://www.sgs.com.tw/terms-of-service>. Attention is drawn to the limitation of liability, indemnification and jurisdiction issues defined therein. Any holder of this document is advised that information contained hereon reflects the Company's findings at the time of its intervention only and within the limits of client's instruction, if any. The Company's sole responsibility is to its Client and this document does not exonerate parties to a transaction from exercising all their rights and obligations under the transaction documents. This document cannot be reproduced, except in full, without prior written approval of the Company. Any unauthorized alteration, forgery or falsification of the content or appearance of this document is unlawful and offenders may be prosecuted to the fullest extent of the law. Unless otherwise stated the results shown in this test report refer only to the sample(s) tested.

Analytical flow chart of Heavy Metal

These samples were dissolved totally by pre-conditioning method according to below flow chart.

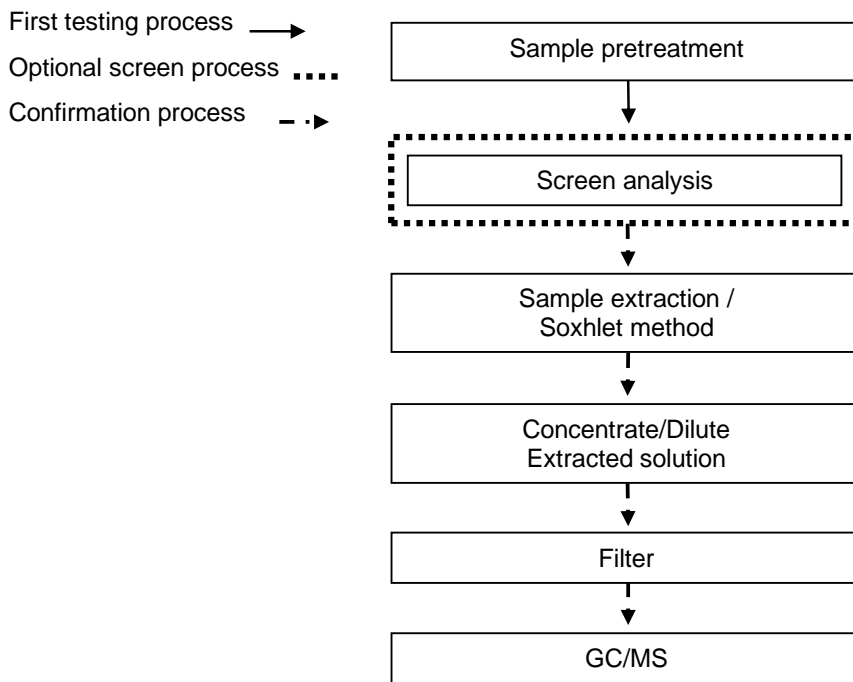
(Cr⁶⁺ test method excluded)



This document is issued by the Company subject to its General Conditions of Service printed overleaf, available on request or accessible at <https://www.sgs.com.tw/terms-of-service> and, for electronic format documents, subject to Terms and Conditions for Electronic Documents at <https://www.sgs.com.tw/terms-of-service>. Attention is drawn to the limitation of liability, indemnification and jurisdiction issues defined therein. Any holder of this document is advised that information contained hereon reflects the Company's findings at the time of its intervention only and within the limits of client's instruction, if any. The Company's sole responsibility is to its Client and this document does not exonerate parties to a transaction from exercising all their rights and obligations under the transaction documents. This document cannot be reproduced, except in full, without prior written approval of the Company. Any unauthorized alteration, forgery or falsification of the content or appearance of this document is unlawful and offenders may be prosecuted to the fullest extent of the law. Unless otherwise stated the results shown in this test report refer only to the sample(s) tested.

MITSUBISHI GAS CHEMICAL CO., INC. ELECTRONICS MATERIAL DIVISION
 5-2, MARUNOUCHI 2-CHOME, CHIYODA-KU, TOKYO 100-8324, JAPAN

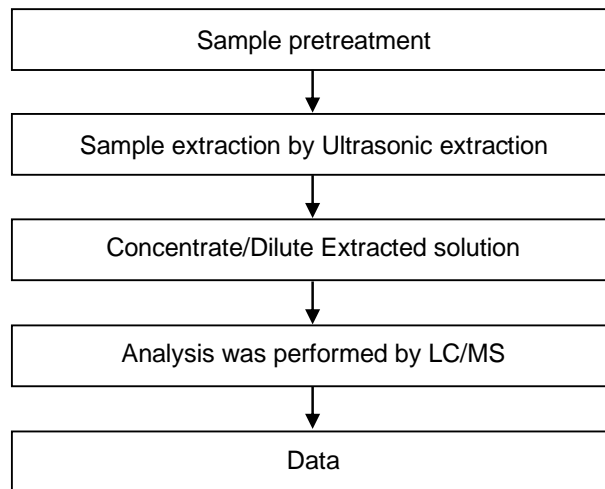
Analytical flow chart – PBBs / PBDEs



This document is issued by the Company subject to its General Conditions of Service printed overleaf, available on request or accessible at <https://www.sgs.com.tw/terms-of-service> and, for electronic format documents, subject to Terms and Conditions for Electronic Documents at <https://www.sgs.com.tw/terms-of-service>. Attention is drawn to the limitation of liability, indemnification and jurisdiction issues defined therein. Any holder of this document is advised that information contained hereon reflects the Company's findings at the time of its intervention only and within the limits of client's instruction, if any. The Company's sole responsibility is to its Client and this document does not exonerate parties to a transaction from exercising all their rights and obligations under the transaction documents. This document cannot be reproduced, except in full, without prior written approval of the Company. Any unauthorized alteration, forgery or falsification of the content or appearance of this document is unlawful and offenders may be prosecuted to the fullest extent of the law. Unless otherwise stated the results shown in this test report refer only to the sample(s) tested.

MITSUBISHI GAS CHEMICAL CO., INC. ELECTRONICS MATERIAL DIVISION
5-2, MARUNOUCHI 2-CHOME, CHIYODA-KU, TOKYO 100-8324, JAPAN

Analytical flow chart - TBBP-A

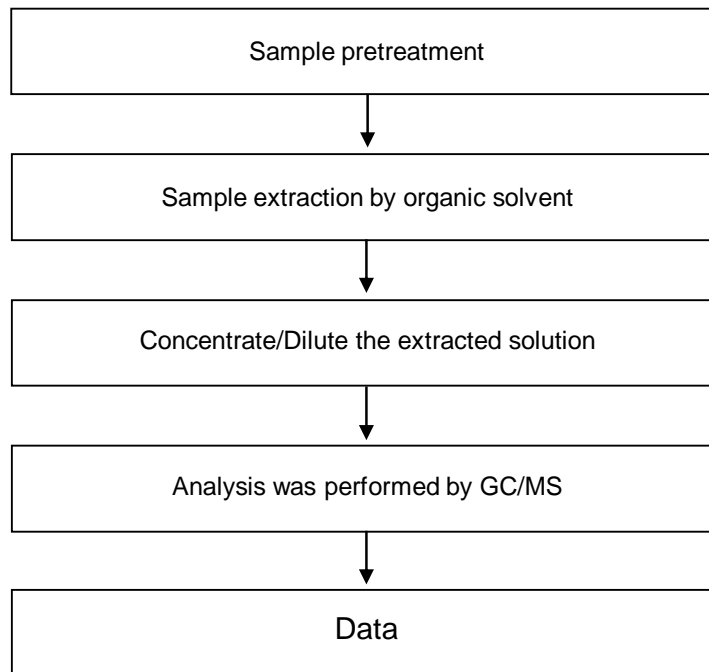


This document is issued by the Company subject to its General Conditions of Service printed overleaf, available on request or accessible at <https://www.sgs.com.tw/terms-of-service> and, for electronic format documents, subject to Terms and Conditions for Electronic Documents at <https://www.sgs.com.tw/terms-of-service>. Attention is drawn to the limitation of liability, indemnification and jurisdiction issues defined therein. Any holder of this document is advised that information contained hereon reflects the Company's findings at the time of its intervention only and within the limits of client's instruction, if any. The Company's sole responsibility is to its Client and this document does not exonerate parties to a transaction from exercising all their rights and obligations under the transaction documents. This document cannot be reproduced, except in full, without prior written approval of the Company. Any unauthorized alteration, forgery or falsification of the content or appearance of this document is unlawful and offenders may be prosecuted to the fullest extent of the law. Unless otherwise stated the results shown in this test report refer only to the sample(s) tested.

MITSUBISHI GAS CHEMICAL CO., INC. ELECTRONICS MATERIAL DIVISION
5-2, MARUNOUCHI 2-CHOME, CHIYODA-KU, TOKYO 100-8324, JAPAN

Analytical flow chart

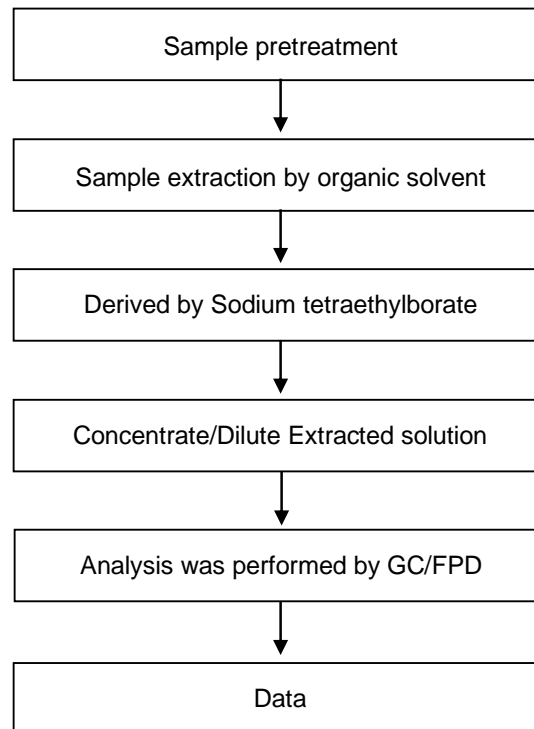
* Apply to: PCBs, PCNs, PCTs, Mirex, Chlorinated Paraffins, DBBT



This document is issued by the Company subject to its General Conditions of Service printed overleaf, available on request or accessible at <https://www.sgs.com.tw/terms-of-service> and, for electronic format documents, subject to Terms and Conditions for Electronic Documents at <https://www.sgs.com.tw/terms-of-service>. Attention is drawn to the limitation of liability, indemnification and jurisdiction issues defined therein. Any holder of this document is advised that information contained hereon reflects the Company's findings at the time of its intervention only and within the limits of client's instruction, if any. The Company's sole responsibility is to its Client and this document does not exonerate parties to a transaction from exercising all their rights and obligations under the transaction documents. This document cannot be reproduced, except in full, without prior written approval of the Company. Any unauthorized alteration, forgery or falsification of the content or appearance of this document is unlawful and offenders may be prosecuted to the fullest extent of the law. Unless otherwise stated the results shown in this test report refer only to the sample(s) tested.

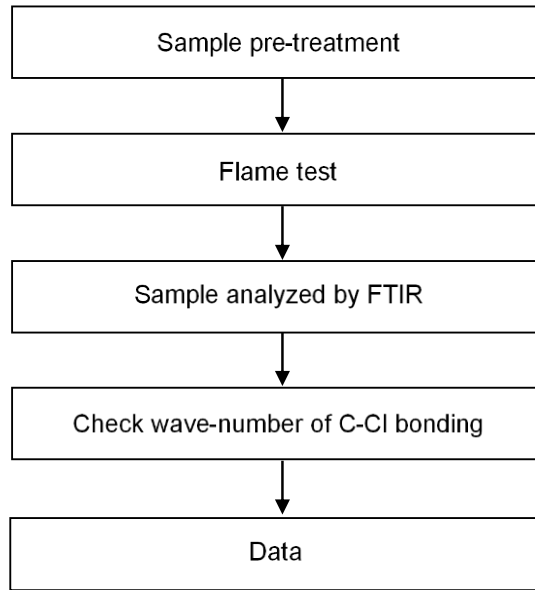
MITSUBISHI GAS CHEMICAL CO., INC. ELECTRONICS MATERIAL DIVISION
5-2, MARUNOUCHI 2-CHOME, CHIYODA-KU, TOKYO 100-8324, JAPAN

Analytical flow chart - Organic-Tin



This document is issued by the Company subject to its General Conditions of Service printed overleaf, available on request or accessible at <https://www.sgs.com.tw/terms-of-service> and, for electronic format documents, subject to Terms and Conditions for Electronic Documents at <https://www.sgs.com.tw/terms-of-service>. Attention is drawn to the limitation of liability, indemnification and jurisdiction issues defined therein. Any holder of this document is advised that information contained hereon reflects the Company's findings at the time of its intervention only and within the limits of client's instruction, if any. The Company's sole responsibility is to its Client and this document does not exonerate parties to a transaction from exercising all their rights and obligations under the transaction documents. This document cannot be reproduced, except in full, without prior written approval of the Company. Any unauthorized alteration, forgery or falsification of the content or appearance of this document is unlawful and offenders may be prosecuted to the fullest extent of the law. Unless otherwise stated the results shown in this test report refer only to the sample(s) tested.

Analysis flow chart - PVC

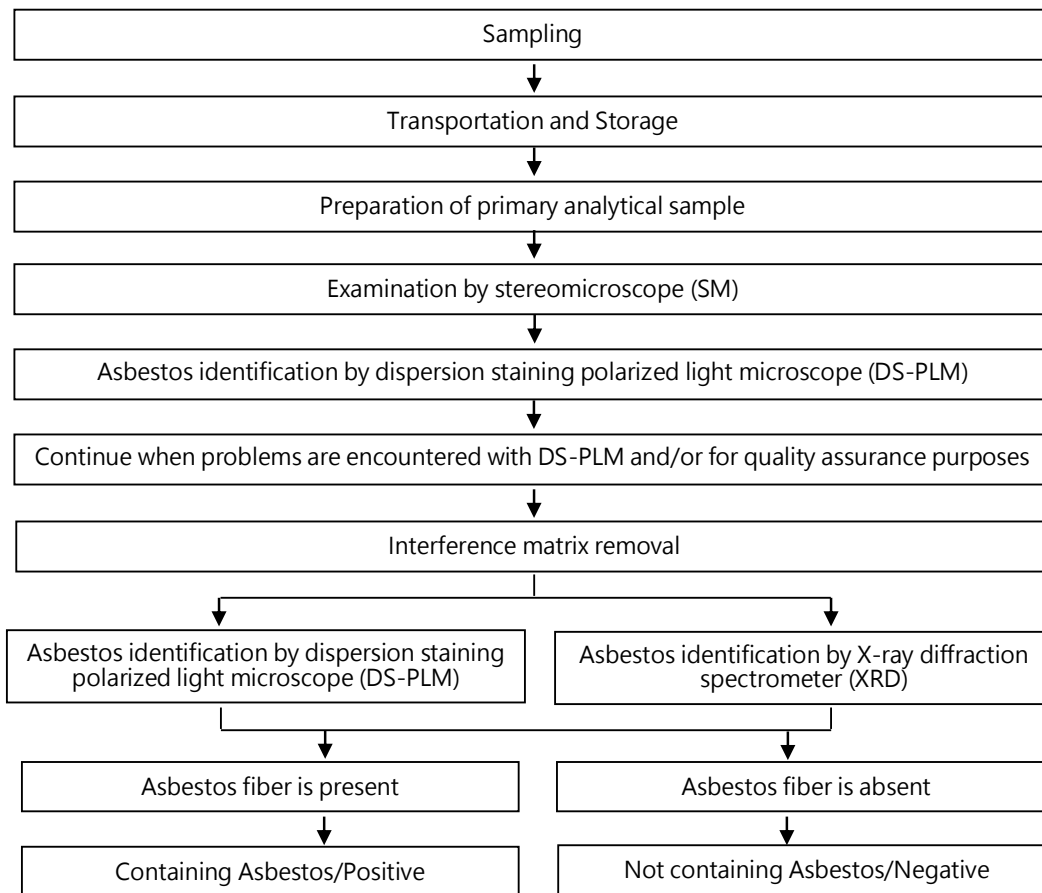


This document is issued by the Company subject to its General Conditions of Service printed overleaf, available on request or accessible at <https://www.sgs.com.tw/terms-of-service> and, for electronic format documents, subject to Terms and Conditions for Electronic Documents at <https://www.sgs.com.tw/terms-of-service>. Attention is drawn to the limitation of liability, indemnification and jurisdiction issues defined therein. Any holder of this document is advised that information contained hereon reflects the Company's findings at the time of its intervention only and within the limits of client's instruction, if any. The Company's sole responsibility is to its Client and this document does not exonerate parties to a transaction from exercising all their rights and obligations under the transaction documents. This document cannot be reproduced, except in full, without prior written approval of the Company. Any unauthorized alteration, forgery or falsification of the content or appearance of this document is unlawful and offenders may be prosecuted to the fullest extent of the law. Unless otherwise stated the results shown in this test report refer only to the sample(s) tested.

MITSUBISHI GAS CHEMICAL CO., INC. ELECTRONICS MATERIAL DIVISION
 5-2, MARUNOUCHI 2-CHOME, CHIYODA-KU, TOKYO 100-8324, JAPAN

Analysis flow chart for determination of Asbestos

【Reference method: EPA 600/R-93/116】

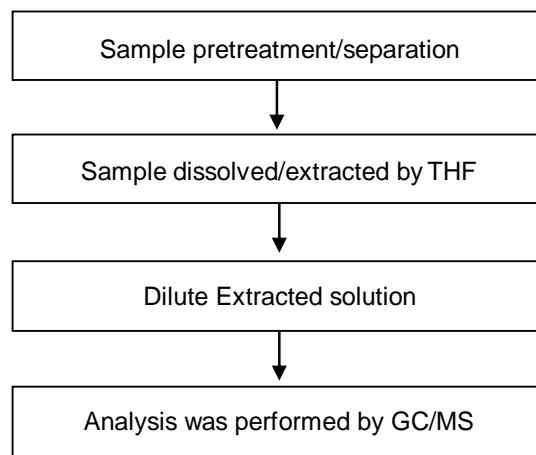


This document is issued by the Company subject to its General Conditions of Service printed overleaf, available on request or accessible at <https://www.sgs.com.tw/terms-of-service> and, for electronic format documents, subject to Terms and Conditions for Electronic Documents at <https://www.sgs.com.tw/terms-of-service>. Attention is drawn to the limitation of liability, indemnification and jurisdiction issues defined therein. Any holder of this document is advised that information contained hereon reflects the Company's findings at the time of its intervention only and within the limits of client's instruction, if any. The Company's sole responsibility is to its Client and this document does not exonerate parties to a transaction from exercising all their rights and obligations under the transaction documents. This document cannot be reproduced, except in full, without prior written approval of the Company. Any unauthorized alteration, forgery or falsification of the content or appearance of this document is unlawful and offenders may be prosecuted to the fullest extent of the law. Unless otherwise stated the results shown in this test report refer only to the sample(s) tested.

MITSUBISHI GAS CHEMICAL CO., INC. ELECTRONICS MATERIAL DIVISION
 5-2, MARUNOUCHI 2-CHOME, CHIYODA-KU, TOKYO 100-8324, JAPAN

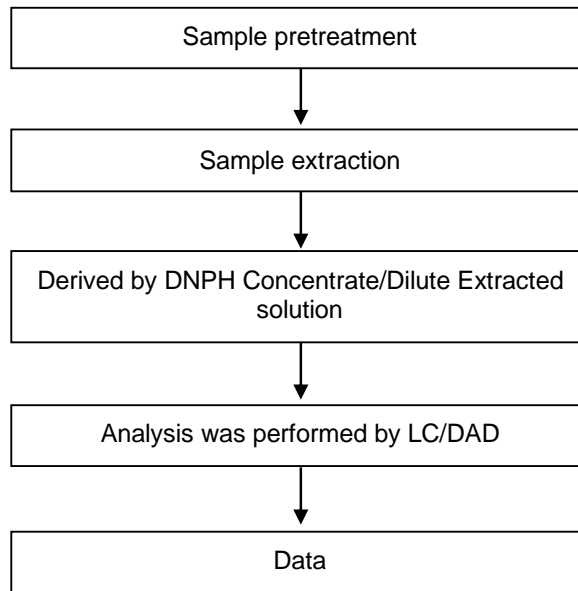
Analytical flow chart - Phthalate

【Test method: IEC 62321-8】



This document is issued by the Company subject to its General Conditions of Service printed overleaf, available on request or accessible at <https://www.sgs.com.tw/terms-of-service> and, for electronic format documents, subject to Terms and Conditions for Electronic Documents at <https://www.sgs.com.tw/terms-of-service>. Attention is drawn to the limitation of liability, indemnification and jurisdiction issues defined therein. Any holder of this document is advised that information contained hereon reflects the Company's findings at the time of its intervention only and within the limits of client's instruction, if any. The Company's sole responsibility is to its Client and this document does not exonerate parties to a transaction from exercising all their rights and obligations under the transaction documents. This document cannot be reproduced, except in full, without prior written approval of the Company. Any unauthorized alteration, forgery or falsification of the content or appearance of this document is unlawful and offenders may be prosecuted to the fullest extent of the law. Unless otherwise stated the results shown in this test report refer only to the sample(s) tested.

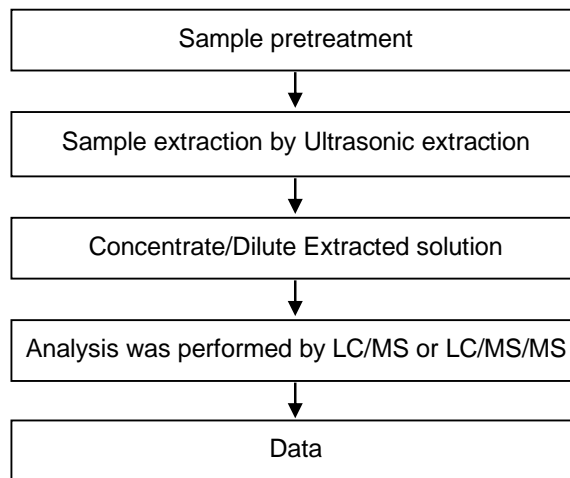
Analytical flow chart - Formaldehyde



This document is issued by the Company subject to its General Conditions of Service printed overleaf, available on request or accessible at <https://www.sgs.com.tw/terms-of-service> and, for electronic format documents, subject to Terms and Conditions for Electronic Documents at <https://www.sgs.com.tw/terms-of-service>. Attention is drawn to the limitation of liability, indemnification and jurisdiction issues defined therein. Any holder of this document is advised that information contained hereon reflects the Company's findings at the time of its intervention only and within the limits of client's instruction, if any. The Company's sole responsibility is to its Client and this document does not exonerate parties to a transaction from exercising all their rights and obligations under the transaction documents. This document cannot be reproduced, except in full, without prior written approval of the Company. Any unauthorized alteration, forgery or falsification of the content or appearance of this document is unlawful and offenders may be prosecuted to the fullest extent of the law. Unless otherwise stated the results shown in this test report refer only to the sample(s) tested.

MITSUBISHI GAS CHEMICAL CO., INC. ELECTRONICS MATERIAL DIVISION
5-2, MARUNOUCHI 2-CHOME, CHIYODA-KU, TOKYO 100-8324, JAPAN

Analytical flow chart - PFOA/PFOS

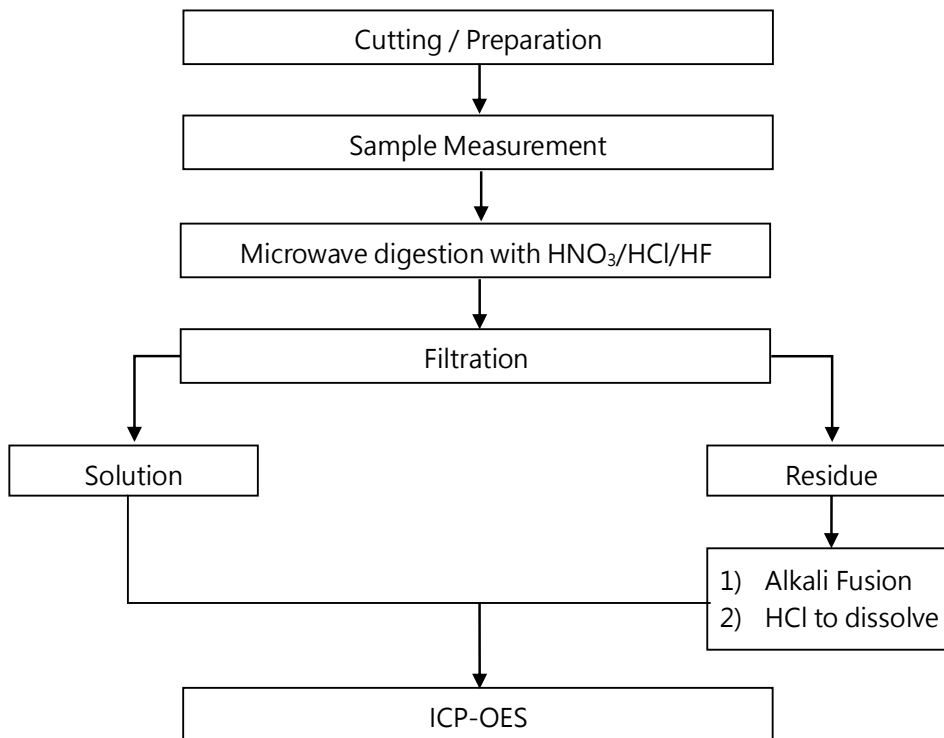


This document is issued by the Company subject to its General Conditions of Service printed overleaf, available on request or accessible at <https://www.sgs.com.tw/terms-of-service> and, for electronic format documents, subject to Terms and Conditions for Electronic Documents at <https://www.sgs.com.tw/terms-of-service>. Attention is drawn to the limitation of liability, indemnification and jurisdiction issues defined therein. Any holder of this document is advised that information contained hereon reflects the Company's findings at the time of its intervention only and within the limits of client's instruction, if any. The Company's sole responsibility is to its Client and this document does not exonerate parties to a transaction from exercising all their rights and obligations under the transaction documents. This document cannot be reproduced, except in full, without prior written approval of the Company. Any unauthorized alteration, forgery or falsification of the content or appearance of this document is unlawful and offenders may be prosecuted to the fullest extent of the law. Unless otherwise stated the results shown in this test report refer only to the sample(s) tested.

Analytical flow chart of Heavy Metal

These samples were dissolved totally by pre-conditioning method according to below flow chart.

【Reference method : US EPA 3051A · US EPA 3052】

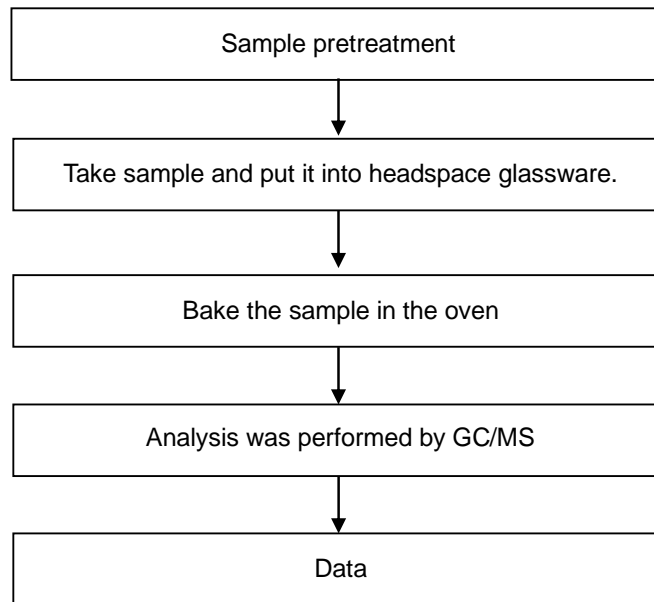


* US EPA 3051A method does not add HF.

This document is issued by the Company subject to its General Conditions of Service printed overleaf, available on request or accessible at <https://www.sgs.com.tw/terms-of-service> and, for electronic format documents, subject to Terms and Conditions for Electronic Documents at <https://www.sgs.com.tw/terms-of-service>. Attention is drawn to the limitation of liability, indemnification and jurisdiction issues defined therein. Any holder of this document is advised that information contained hereon reflects the Company's findings at the time of its intervention only and within the limits of client's instruction, if any. The Company's sole responsibility is to its Client and this document does not exonerate parties to a transaction from exercising all their rights and obligations under the transaction documents. This document cannot be reproduced, except in full, without prior written approval of the Company. Any unauthorized alteration, forgery or falsification of the content or appearance of this document is unlawful and offenders may be prosecuted to the fullest extent of the law. Unless otherwise stated the results shown in this test report refer only to the sample(s) tested.

Analytical flow chart of volatile organic compounds (VOCs)

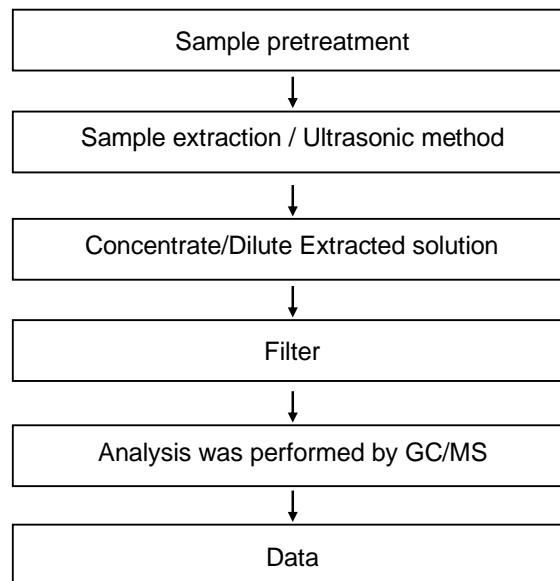
【Reference method : US EPA 5021A】



This document is issued by the Company subject to its General Conditions of Service printed overleaf, available on request or accessible at <https://www.sgs.com.tw/terms-of-service> and, for electronic format documents, subject to Terms and Conditions for Electronic Documents at <https://www.sgs.com.tw/terms-of-service>. Attention is drawn to the limitation of liability, indemnification and jurisdiction issues defined therein. Any holder of this document is advised that information contained hereon reflects the Company's findings at the time of its intervention only and within the limits of client's instruction, if any. The Company's sole responsibility is to its Client and this document does not exonerate parties to a transaction from exercising all their rights and obligations under the transaction documents. This document cannot be reproduced, except in full, without prior written approval of the Company. Any unauthorized alteration, forgery or falsification of the content or appearance of this document is unlawful and offenders may be prosecuted to the fullest extent of the law. Unless otherwise stated the results shown in this test report refer only to the sample(s) tested.

MITSUBISHI GAS CHEMICAL CO., INC. ELECTRONICS MATERIAL DIVISION
5-2, MARUNOUCHI 2-CHOME, CHIYODA-KU, TOKYO 100-8324, JAPAN

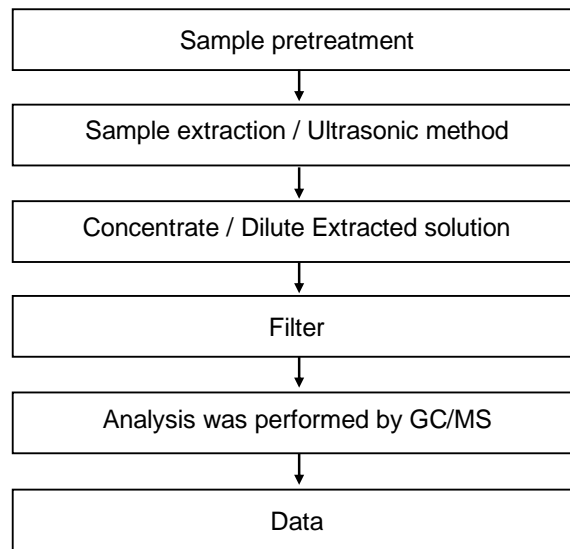
Analytical flow chart - HBCDD



This document is issued by the Company subject to its General Conditions of Service printed overleaf, available on request or accessible at <https://www.sgs.com.tw/terms-of-service> and, for electronic format documents, subject to Terms and Conditions for Electronic Documents at <https://www.sgs.com.tw/terms-of-service>. Attention is drawn to the limitation of liability, indemnification and jurisdiction issues defined therein. Any holder of this document is advised that information contained hereon reflects the Company's findings at the time of its intervention only and within the limits of client's instruction, if any. The Company's sole responsibility is to its Client and this document does not exonerate parties to a transaction from exercising all their rights and obligations under the transaction documents. This document cannot be reproduced, except in full, without prior written approval of the Company. Any unauthorized alteration, forgery or falsification of the content or appearance of this document is unlawful and offenders may be prosecuted to the fullest extent of the law. Unless otherwise stated the results shown in this test report refer only to the sample(s) tested.

MITSUBISHI GAS CHEMICAL CO., INC. ELECTRONICS MATERIAL DIVISION
5-2, MARUNOUCHI 2-CHOME, CHIYODA-KU, TOKYO 100-8324, JAPAN

Analytical flow chart - Organic phosphorus compounds



This document is issued by the Company subject to its General Conditions of Service printed overleaf, available on request or accessible at <https://www.sgs.com.tw/terms-of-service> and, for electronic format documents, subject to Terms and Conditions for Electronic Documents at <https://www.sgs.com.tw/terms-of-service>. Attention is drawn to the limitation of liability, indemnification and jurisdiction issues defined therein. Any holder of this document is advised that information contained hereon reflects the Company's findings at the time of its intervention only and within the limits of client's instruction, if any. The Company's sole responsibility is to its Client and this document does not exonerate parties to a transaction from exercising all their rights and obligations under the transaction documents. This document cannot be reproduced, except in full, without prior written approval of the Company. Any unauthorized alteration, forgery or falsification of the content or appearance of this document is unlawful and offenders may be prosecuted to the fullest extent of the law. Unless otherwise stated the results shown in this test report refer only to the sample(s) tested.

Test Report

No.: ETR21301076

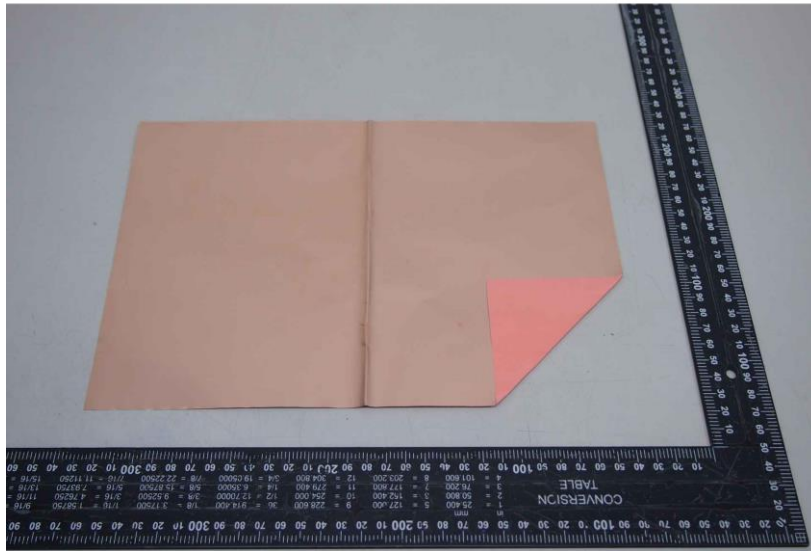
Date: 09-Mar-2021

Page: 37 of 37

MITSUBISHI GAS CHEMICAL CO., INC. ELECTRONICS MATERIAL DIVISION
5-2, MARUNOUCHI 2-CHOME, CHIYODA-KU, TOKYO 100-8324, JAPAN

* The tested sample / part is marked by an arrow if it's shown on the photo. *

ETR21301076



** End of Report **

This document is issued by the Company subject to its General Conditions of Service printed overleaf, available on request or accessible at <https://www.sgs.com.tw/terms-of-service> and, for electronic format documents, subject to Terms and Conditions for Electronic Documents at <https://www.sgs.com.tw/terms-of-service>. Attention is drawn to the limitation of liability, indemnification and jurisdiction issues defined therein. Any holder of this document is advised that information contained hereon reflects the Company's findings at the time of its intervention only and within the limits of client's instruction, if any. The Company's sole responsibility is to its Client and this document does not exonerate parties to a transaction from exercising all their rights and obligations under the transaction documents. This document cannot be reproduced, except in full, without prior written approval of the Company. Any unauthorized alteration, forgery or falsification of the content or appearance of this document is unlawful and offenders may be prosecuted to the fullest extent of the law. Unless otherwise stated the results shown in this test report refer only to the sample(s) tested.